



Centennial Memorial

**CELEBRATING A CENTURY
OF PRESENCE AND SERVICE**





TABLE OF CONTENTS

	PAGE
Welcome	3
Arrival in New Mexico	4
Foundation of the Congregation	6
Mission and Corporate Statements	9
Timeline of Mission	10
Centennial Reflection	14
Our Lady of Victory Missionary Sisters 1922-2022	19
OLVM Leadership 1922-2022	78
Diocesan Assignments	89
Benefactors	101
Tributes	105
Extra-Ordinary Chapter: October 2021	113
Covenant Associates	117
Acknowledgements	122





WELCOME

June 2022

Dear Sisters, Associates, Colleagues, Friends, and Family,

The celebration of our Centennial Year is a time to celebrate and remember our life. It is a time to look back and look forward; it is a time to ponder who we are and where we have been. It is also a time to awaken to the in-breaking of the future.

For the Victory Noll Sisters, 2022 marks the remembering and celebrating of 100 years of being a missionary community. Like you, we have lived through many changes as we deepened our quest for God, and were sent to the edges of Church and society as missionaries, to walk with people in their faith journey, to develop leaders and ministers, and to advocate for justice in so many arenas of life. We started as Catechists, and over time expanded our ministries to respond to new needs. Even so, every Sister has had the heart of a catechist.

During the last 10 years, we as a community have been on a different kind of journey. It is the journey of becoming small, and meeting our future with integrity. It is a journey that chose us. We were being called to claim the endings and make huge decisions as we embraced our changing reality. We were also called to discover the new blessings of this time. However, we did not stand alone in the shifting reality of religious life in the United States. We have had many companions on this journey. The occasion of our centennial celebration also marks the beginning of living into our choices for new life. These choices include: repurposing our Victory Noll buildings for restorative services for those struggling with addictions, selling our land to ACRES Land Trust, creating a legacy plan, embracing lay men and women to serve on two boards on our behalf, and welcoming a commissary (a Sister from another congregation) to lead and companion our community. We are freeing ourselves to live the gospel in new ways as Victory Noll Sisters.

This memorial book shares in pictures this journey of 100 years from our simple beginnings in 1922, through the expansion years of the 1940s and 1950s, and to the mandates of the Second Vatican Council inviting us to be part of a changing Church and changing Religious Life. It also marks new endings and beginnings ushered in by the Great Turning in religious life at this time in history.

However, the great changes in our Church, society, our earth home also impact and challenge you, our associates, colleagues, friends and family. Our lives have intersected in so many ways. Thank you for sharing our journey, and celebrating this centennial with us!

Sister Mary Jo Nelson, OLVM

Sister Mary Jo Nelson, OLVM
President
Our Lady of Victory Missionary Sisters



Archbishop Albert Daeger (center) greets Marie Benes (left) and Julia Doyle (right) of the Society of Missionary Catechist of Our Blessed Lady of Victory as they arrive in Santa Fe, New Mexico on August 5, 1922, to begin their initial mission assignment.



ARRIVAL IN NEW MEXICO August 5, 1922

Father John Joseph Sigstein had worked for years to see his dream come to fruition. His Society of Missionary Catechists of Our Blessed Lady of Victory had its first two members in Julia Doyle and Marie Benes, and he was sending them on their first mission assignment to New Mexico.

The date for leaving Chicago was set for August 3, 1922. The Catechists would arrive in Santa Fe two days later, the feast of Our Lady of the Snow.

The actual departure of the Catechists from Chicago was very quiet, almost an anticlimax after the long months and years of planning. Julia worked right up to the last minute and joined Marie at the Academy of Our Lady the night before the departure ceremonies. Very early the next morning Father Sigstein celebrated Mass. Besides the two Missionary Catechists there were present only Marie Bodin, Mother Aquinata, and

OUR LADY OF VICTORY MISSIONARY SISTERS

several other Notre Dame Sisters. Julia and Marie received the sacrament of penance before Mass and pronounced their simple private vows of poverty, chastity, and obedience in the confessional.

At the morning ceremonies Julia and Marie wore their ordinary street clothes. Before they boarded the train they changed to their uniforms. There was very little about the uniform, however, to distinguish it from what other women were wearing. The design was simple, a contemporary dress that was common in 1922. They wore straw hats that were also in style at the time. Julia mentions later that they paid ten dollars for them. It was on the train trip that each sewed a simple little veil, dark blue with a white band.

Father Sigstein was unable to make that first trip to New Mexico, so he asked his good friends in New Mexico, Father Anthony Blaufuss and Will Frey, to assist the two Catechists getting settled.

The train was due to arrive in Santa Fe at 6 p.m. Saturday, August 5. Father Blaufuss boarded it at Wagon Mound and accompanied the women into the city. He told them later he did not recognize them immediately because he was looking for two women dressed in gray, not blue.

The three of them — Julia, Marie, and Anthony — were met at Lamy Junction (where passengers bound for Santa Fe were still discharged, there being no rail line into the city) by Will Frey and taken to the house prepared for them near the Cathedral and not far from Archbishop Albert Daeger's residence.

Will "had the potatoes cooking," Father Blaufuss reported later to Father Sigstein, and supper was ready shortly after the little group arrived. They had hardly begun to eat when the Archbishop came to give them a hearty welcome.

Julia and Marie would soon be on their way to the tiny town of Watrous, where they began their work to proclaim the Gospel in solidarity with all persons, especially those living in poverty and oppression.



Catechists Marie Benes (left) and Julia Doyle set up the first mission center of the Society of Missionary Catechists in Watrous, New Mexico, in August, 1922.

— Adapted from "The Story of Victory Noll, Vol.1"
by Sr. Elizabeth Ann Clifford, OLVN



FOUNDATION OF THE CONGREGATION



Talk on the Society of Missionary Catechists to the Ladies of St. Michael's Church

By Father John Joseph Sigstein, OLVN Founder
Orland Park, Illinois
February 11, 1946

Twenty-five years ago when the Society of Missionary Catechists was founded, very little if anything was known by the Catholics of this country about their poor missions in the West and Southwest parts of this country. In the East, the Catholics had already begun to take an interest in the foreign missions. The Maryknoll Foreign Mission Society had already made its start in awakening an interest in their missions in China! The young people especially became enthusiastic about the foreign missions, because there is something romantic about the appeal they made to their adventurous spirit. But they knew nothing about the poor struggling home missions, until Bishop Kelly, the founder of the Church Extension Society, finally roused up some interest in these missions.

Now, just about this same time hundreds of thousands of poor Mexicans crossed our borders and started to work on the farms and railroads in California, Arizona, Southern New Mexico, Texas and Colorado. Many thousands of these Mexican people came because they were good Catholics who had been persecuted by the leaders of the revolution in their country. These poor Mexicans came as strangers to a strange country. They were looked down upon and many were driven from pillar to post even by our American Catholics. The coming of these poor Catholic people into the United States was not like the coming of our Catholic immigrants

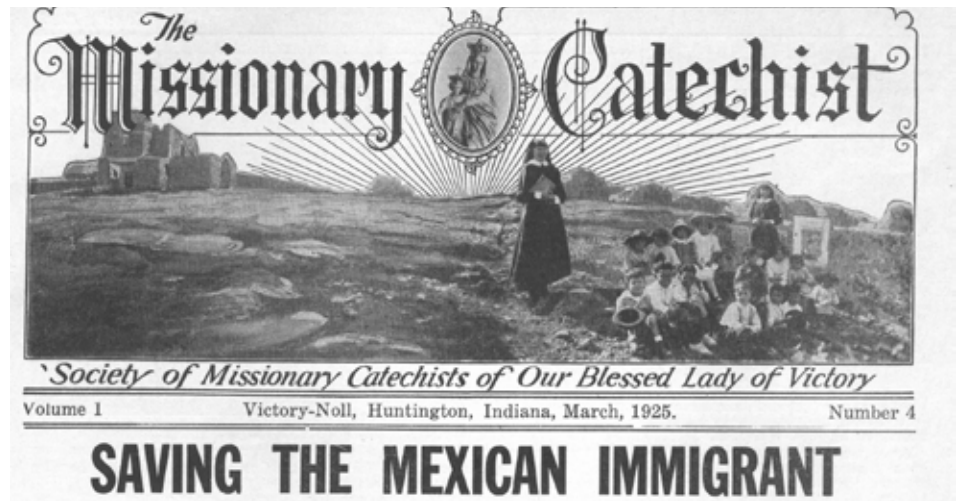


OUR LADY OF VICTORY MISSIONARY SISTERS

from Europe. These good immigrants usually brought their priests with them or were soon followed by zealous priests and nuns. But not so with the first Mexican immigrants. They were not accompanied by their priests; it was not until the revolutions started to persecute the Church in 1915 that the first bishops and priests came over here. These were followed by more priests in the early twenties. But in the meantime the poor Mexicans here were almost entirely neglected by our American Catholics. But they were certainly not neglected by the Protestant missionary societies. They began an intensive campaign to rob the Mexican of his Faith. For this purpose they sent among them not only preachers but social welfare workers, doctors, nurses ... in a few years, the Church lost hundreds of thousands of souls.

Meanwhile, when these things became known in the East and Central West, bishops and priests began to take notice of it, and there were lots and lots of articles written in our Catholic papers and magazines about what could or should be done in stopping this tremendous leak-

age in the Church. But nothing was done. Conditions became worse, and the Protestant missionaries soon extended their activities to the native Spanish people in New Mexico. These native people in the northern part of New Mexico were the descendants of the original Spanish settlers who came from Spain by way of Old Mexico and settled in that country. These people, all Catholic of course, but very poor, had their original adobe or mud churches built over three hundred years ago. And these missions were taken care of by zealous French priests who came from France to take the place of the old Spanish Franciscan padres who had been driven from the country by Masonic rulers of old Mexico. All these missions were included in the Archdiocese of Santa Fe, New Mexico. There were very few schools in these missions. There was no possibility of building or maintaining these schools because the people were too poor to build them, too poor even to pay the salaries of the missionary pastors. These poor French missionaries had to take care of widely separated missions, some of them as big as the state of Rhode Island and Connecticut put together. Under such circumstances it was, of course, impossible for the missionary to get around to attend to his mission more than twice a year. As a result, many of the people died without the Sacraments and the children, of course, got very little if any religious instruction in many places ...



OUR LADY OF VICTORY MISSIONARY SISTERS

Thirty-three years ago, I visited those poor missions in New Mexico for the first time. I met the Archbishop, and after he told me of the poverty-stricken conditions of his missions and of the activities of the Protestant missionaries in robbing his people of their God-given Faith, I was so much impressed with the urgent need of saving the Faith of these poor Catholics and their children that I felt that Jesus and Mary had providentially called me to take up this work as my life work. Although I was sick at the time, I started plans for founding the Society of Missionary Catechists. But being all alone, having no money or backing, it was not until August, 1921, that I was able to gather together the first candidates and start the Society in the Academy of the Notre Dame Sisters in Chicago.

Then, after the Catechists made their simple profession, they were sent out to a little adobe building and lived a community life there. Never less than three in the house. Then every day after teaching the children and taking care of the poor in their homes in the village in which they lived, they would drive out to the missions, sometimes twenty or thirty miles away, and teach the children catechism after public school hours, returning to their missions again that same evening. But if the mission was too far away, then the Catechists would go there on weekends, take along a few cooking utensils and food, and live in the church sacristy until the following Monday. In this way they got all the children in the surrounding missions instructed and prepared to make their First Holy Communion on the first visit of the Padre.

You haven't any idea, my good ladies, of the tremendous sacrifices these first Catechists made. They lived in old adobe buildings, sometimes in the high mountains of northern New Mexico where it was twenty or thirty degrees below zero in winter, sometimes under a partly covered roof where it snowed on their beds. They were content, of course, to live and work under such hard conditions. But what made it hard for them was that the general run of priests out there in that country did not at first place much confidence in the Catechists since they thought they were fine ladies that came from the East (for Chicago to them is the East) and would not make the supreme sacrifice. It wasn't long before the missionaries in New Mexico began to see the results of the zealous, self-sacrificing work of the Catechists and in their devotion to their people, laboring and sacrificing and suffering for them to care for their spiritual and temporal needs and to give the children solid religious instruction and real Christian training ...

Due to the publicity that was given to the work of the Catechists by OUR SUNDAY VISITOR and especially after the SUNDAY VISITOR had built a novitiate at Huntington, Indiana, the work of the Catechists spread very fast all over the West. All the missionary bishops in the Western dioceses begged to have Catechists work in their dioceses. Soon the work spread as far as California, Nevada, Utah and other Western states. And in a short time the Catechists had twelve convents in California alone. Today there are about three hundred Catechists working in ten different states with about thirty thousand children under instruction.

Mission Statement

Our Lady of Victory Missionary Sisters

- ❖ Proclaim the Word of God
- ❖ Foster justice
- ❖ Stand in solidarity with those living in poverty and oppression
- ❖ Promote the development of leaders

Core Values:

- ❖ Hospitality
- ❖ Justice
- ❖ Simplicity
- ❖ Adaptability



Corporate Statement

Our Lady of Victory Missionary Sisters

Rooted in our charism to proclaim the Gospel in solidarity with all persons, especially those living in poverty and oppression.

We commit ourselves to ongoing prayer, study and action on behalf of human rights, justice and peace.

We work for:

- ❖ Equality and justice for women and protection for children
- ❖ Just and humane immigration policies
- ❖ Ecological sustainability
- ❖ Abolition of the death penalty
- ❖ Elimination of all weapons of mass destruction — nuclear, biological and chemical
- ❖ Resolution of conflict through diplomatic and peaceful negotiations



TIMELINE OF MISSION

When Father John Joseph Sigstein sent his first Catechists to New Mexico, their mission was simple — bring religious education to the poor immigrants who had been overlooked by the Church. The mission soon evolved into helping those people receive other resources, including the basic needs of living. Through the following decades, the OLVM Mission has continued to evolve, to expand to meet the needs of those who have been marginalized by society, using the most current means available. The Sisters advocate for justice and equality, especially for those living in poverty and oppression, for protection of the Earth’s natural resources. They strive to develop new leaders who can carry on the work. Remaining at the root of mission is the OLVM Charism, to proclaim the Good News of the Gospel, which serves as the basis for the service and presence of the Victory Noll Sisters.



OUR LADY OF VICTORY MISSIONARY SISTERS

1920-1929: BEGINNINGS

- Father John Joseph Sigstein begins religious community Society of Missionary Catechists in Chicago
- Collaborators with Fr. Sigstein: Bishop John Francis Noll and the O'Donnells
- Dedication of the Victory Noll Motherhouse in Huntington, IN
- Catechists Julia Doyle and Marie Benes establish first mission in Watrous, NM



1930-1939: LAY COLLABORATORS AND NEW GOVERNANCE

- Mary's Loyal Helpers
- Associate Catechists of Mary
- Petition Sacred Congregation for approval of Congregation
- First General Chapter: Elects Mother Catherine Olberding



1940-1949: RESPONSE TO A NEW CALL

- Srs. Monica Ulibarri and Mary Bernarda Marquez work in Panama to help establish first native religious congregation – Missionary Catechists of the Miraculous Medal
- Srs. Helen Flaspohler and Mary Louise Perl assist in forming Home Visitors of Mary in Detroit
- Our title changes from Society of Missionary Catechists to Our Lady of Victory Missionary Sisters

1950-1959: EXPANSION OF MISSION CENTERS

- Many new mission centers open as Bishops request OLVN Sisters
- Petition to Rome for Decree of Praise

OUR LADY OF VICTORY MISSIONARY SISTERS



1960-1969: RENEWAL OF RELIGIOUS LIFE — VATICAN II

- Final approval from the Holy See for Decree of Praise
- Holy Family Building completed
- Many changes in religious life, collegiality, subsidiarity and personal responsibility; governance structure
- New venture in religious education classes using television in Massachusetts and Texas
- Srs. Muriel Balch and Carolyn Ortega travel to Bolivia to establish new mission
- St. Elizabeth of Hungary Clinic begins in Tucson, AZ
- Sisters encouraged to pursue higher education
- Formation process begins to take place in local communities

1970-1979: MEETING MODERN NEEDS WITH MODERN MEANS

- Collegial Assembly
- Resource Sharing Program begins
- Establishment of Victory Noll House of Prayer
- Sr. Ruth Banet sent to Buena Vista, Bolivia, to begin formation program
- Covenant Associates begin



1980-1989: MEETING THE CHALLENGES

- Begin the use of computers
- Changing governance structure from President and Council to Leadership Team
- Mission Groups begin

OUR LADY OF VICTORY MISSIONARY SISTERS

1990-1999: EXPANDING OUR IDEA OF MISSION

- Regional meetings come to be the way we gather as a Community
- Mission Groups become very viable
- Ministry Centers started by Sisters: Julia Center, Evelyn Mourey Center, Victory Noll Center, Casa de Las Comunidades, CESU (Library) in Bolivia
- Cherish the Earth Committee and Land audit



2000-2009: ANTICIPATING THE FUTURE

- Remodeling of buildings: OLV, Sacred Heart, St. Joseph and adding lounges in Holy Family Building
- Restructuring of finance office, hiring of a lay finance director and investment consultant
- Initiation of Welcoming Communities
- Hiring lay director for human resources



2010-2019: VIABLE PARTNERSHIPS

- Collaboration with Saint Anne's Communities for health care
- Collaboration with Acres Land Trust
- Begin gathering in Assemblies three times a year
- John Joseph Sigstein Foundation established

2020-CURRENT: PARTICIPATION IN THE EMERGING RELIGIOUS LIFE

- Repurposing of the motherhouse buildings and collaboration with Huntington County
- Impacted by COVID Pandemic in many ways
- Celebration of our Centennial
- Begin new governance structure
- Transition and transformation of Congregation, as they face a new way being a congregation





CENTENNIAL REFLECTION

**By Sister Rita Musante
OLVM Centennial Committee**

The story of 100 years is nearly impossible to capture in words on a page. It can only be told as a kind of “flyover” story, seeing broad landscapes quickly and touching lightly on only some of the major landmarks that hint at so much more. The story of Victory Noll is the story of a 100-year long journey, begun by men and women of faith who were brave enough to step out into the unknown to which God called them.

Father John Joseph Sigstein was a man of prayer who saw a need and had a vision. He shared his dream, which became flesh in the hearts and lives of women and men of faith around him. As hearts were touched and lives were changed, Victory Noll was born, in the early decades of the 20th century.

Visionary though they were, could Father Sigstein and his early collaborators ever have imagined the kind of world and Church into which he would send his fledgling community, the Missionary Catechists of Our Blessed Lady of Victory? By his passion to bring the good news of Jesus to those living on the margins of our society and our Church, would he and his new religious congregation be able to hold onto his vision of vowed religious missionary women whose ministries would not be contained within the four walls of school or hospital? Could they maintain the original vision of missionaries able to respond quickly and personally to new needs, to go to new victims of our society’s and Church’s neglect, learning their needs of body, mind and spirit, and, living among them across the United States and Bolivia, across 100 years, be able to evangelize, catechize, heal, and empower, “meeting modern needs with modern means?”



OUR LADY OF VICTORY MISSIONARY SISTERS

The rate of change in society and in the Church in the past century has been breathtaking at best, devastating at worst for most people living in poverty. Developments in modes of transportation, communication, commerce, food production, city-building, warfare and much more, have all had overwhelming and negative effects on the world's poorest people.

The Catholic Church has also experienced its own developments which have moved its customs and practices from medieval times into the modern world, guided by the Second Vatican Council (1962-1965).

This Council proclaimed in its document, *The Church in the Modern World*: "The joys and the hopes, the griefs and the anxieties of the people of this age, especially those who are poor or in any way afflicted, these too are the joys and hopes, the griefs and anxieties of the followers of Christ." What a confirmation of the Victory Noll charism and mission!



Within the Church's monumental shift, Victory Noll unfolded its own newness, moving

from "top-down" leadership to collegiality, subsidiarity and personal responsibility of all members, gathered in mission groups and regions, areas and assemblies throughout the country and in Bolivia. We moved from "mission assignments" by superiors to mutual discernment and decision-making in ministries.

More recently, Victory Noll developments have been from responsible maintenance of our buildings and land to repurposing and eventually selling them as we no longer needed them. A Cherish the Earth committee sponsored a land audit, out of which came many ideas, among them a Land Ethic. This Ethic helped us eventually sell our land to ACRES Land Trust, which pledges to maintain the land in its natural state "in perpetuity." The sale of our Holy Family healthcare building to, and in partnership with, Saint Anne Communities provided for not only our own Sisters' healthcare needs but also for those of the Huntington community as well. The remaining buildings and land have been sold to Huntington County, which is already implementing plans for a wholistic rehab treatment center for men with addictive illnesses. And most recently we are taking steps toward suspending our present mode of self-governance through elected leaders and periodic Chapter meetings with elected delegates, to having a leader from another Congregation of Sisters, recommended by the VN Congregation and officially appointed by the Vatican.

OUR LADY OF VICTORY MISSIONARY SISTERS

Throughout 100 long and full and amazing years, the Missionary Sisters of Our Lady of Victory have lived in, contemplated and embraced this unfolding world, this developing Church, through the lens of faith and the vision of their founder. Then they have taken action, as healers, catechists, justice advocates, social workers, parish and diocesan ministers, spiritual directors, college campus ministers, organizers, paralegals, prison visitors, consultants, counselors and liturgists, wherever people's basic needs of spirit, mind and body were not being met by others.

Thirty-six states of the U.S.A. and four locations in Bolivia were the settings for these works of mercy and evangelization, catechetics and social justice. Associates, volunteers, mission bands attracted by the charism and mission of the Sisters, joined them. Always the Victory Noll values of hospitality, justice, simplicity and adaptability underpinned loving presence and ministry with immigrants, refugees, asylum seekers, people caught in cycles of generational poverty and abandonment, and so many others. All were welcome, in light of God's mission and the vision of the founder.



Anticipating a future with fewer Sisters and an abundance of material resources to be shared, the Sisters have sought partners aligned with the Victory Noll mission, charism and values to help them in this blessed task and responsibility of distributing buildings, land, and financial resources. This challenge is being met in the shadow of a global, on-going pandemic and in the growing awareness of the reality of climate change and its effects on the poorest people.

The Victory Noll beat goes on! Sister Alma Bill suggests that "Each of us has a story. In fact, each of us IS a story. We are an on-going story which connects us with our past, giving us a sense that we have come from somewhere and are going somewhere. ... Although yet hidden from us, (the future) is already inter-laced with gratitude for God's care of the past and confidence in his providence for that which is yet to come."

This Centennial Year is a time for remembering our 100 years with gratitude, a time for embracing the present with trust and confidence, and a time for anticipating the future with courage and hope in God and one another.

"For all that has been: THANKS! For all that will be: YES!"

— Dag Hammarskjöld

United Nations General Secretary 1953-61



VICTORY NOLL SISTERS

April 2022

FRONT ROW: Sr. Valeria Foltz, Sr. Betty Anderson, Sr. Alma Bill, Sr. Dennis Kerr, Sr. Joan Arnold, Sr. Maria Luisa Valdez, Sr. Rose Ann Kaiser, Sr. Regina Marie Morrissey.

SECOND ROW: Sr. Helen Rodriguez-Marin, Sr. Connie Lewandowski, Sr. Kathleen Cummings, Sr. Adela Amoroso-Medrano, Sr. Angeline Walczyk, Sr. Judy Turnock, Sr. Rose Zita Rosonke, Sr. Christopher Rudell, Sr. Mary Louise Rowney.

THIRD ROW: Sr. Lucy Regalado, Sr. Francisca Olvera, Sr. Clarita Trujillo, Sr. Beaty Haines, Sr. Guadalupe Aguilar-Huanca, Sr. Guadalupe Flores-Ocaña, Sr. Leora Linnenkugel, Sr. Lucille Martinez, Sr. Rita Musante.

FOURTH ROW: Sr. Teresa Aparicio-Cervantes, Sr. Mary Jo Nelson, Sr. Ginger Downey, Sr. Jeanette Halbach, Sr. Terri Nederhiser, Sr. Mary Alice Murphy.





Our Lady of Victory Missionary Sisters

OUR LADY OF VICTORY MISSIONARY SISTERS 1922-2022



OUR LADY OF VICTORY MISSIONARY SISTERS



**Guadalupe
Aguilar-Huanca**

Colquiri LaPaz, Bolivia
ENTER: FEBRUARY 11, 1999

MISSION WORK
Religious Education, Certified
Nursing Assistant, Memory Care



**Eva
Alberding**

Remington, Indiana
ENTER: JULY 14, 1927
DEATH: FEBRUARY 4, 1971

MISSION WORK
Catechetical



**Mary Elise
Allmaras**

New Rockford, North Dakota
ENTER: MARCH 12, 1938
DEATH: SEPTEMBER 21, 2003

MISSION WORK
Catechetical, Nursing



**Margaret Ann
Altmiller**

Fort Smith, Arkansas
ENTER: OCTOBER 27, 1948
DEATH: MAY 14, 2012

MISSION WORK
Catechetical,
Diocesan CCD



**Adela
Amoroso-Medrano**

Oruro, Bolivia
ENTER: OCTOBER 17, 1973

MISSION WORK
Religious Education, Adult
Formation, Social Services



**Elizabeth
Anderson**

New York, New York
ENTER: SEPTEMBER 6, 1954

MISSION WORK
Religious Education, Social
Service, Congregation
Leadership

OUR LADY OF VICTORY MISSIONARY SISTERS



**Teresa
Aparicio-Cervantes**

Zacaou Michoacan, Mexico
ENTER: JULY 17, 1967

MISSION WORK
Religious Education, Immigration
Outreach, Founder of Casa de
las Comunidades



**Margarita
Aragon**

Delia, New Mexico
ENTER: JULY 14, 1927
DEATH: DECEMBER 23, 2003

MISSION WORK
Catechetical, Social Services



**Joan
Arnold**

Lebanon, Pennsylvania
ENTER: OCTOBER 27, 1948

MISSION WORK
General Treasurer, Religious
Education, Congregation
Leadership



**Carlota
Baca**

Pena Blanca, New Mexico
ENTER: OCTOBER 28, 1928
DEATH: DECEMBER 12, 2013

MISSION WORK
Catechetical,
Pastoral Ministry



**Cordelia Marie
Bahl**

Hays, Kansas
ENTER: JANUARY 19, 1925
DEATH: DECEMBER 3, 1995

MISSION WORK
Catechetical, Social Work,
Nursing, Leadership



**Muriel
Balch**

St. Louis, Missouri
ENTER: SEPTEMBER 4, 1931
DEATH: OCTOBER 18, 1989

MISSION WORK
Catechetical, Social Work,
Youth, Congregation Leadership

OUR LADY OF VICTORY MISSIONARY SISTERS



**Ruth
Banet**

Fort Wayne, Indiana

ENTER: OCTOBER 27, 1949

DEATH: OCTOBER 27, 1986

MISSION WORK

Catechetical, Pastoral,
Bolivia Mission



**Mary Paul
Barthen**

Chicago, Illinois

ENTER: JUNE 29, 1924

DEATH: APRIL 13, 1988

MISSION WORK

Catechetical, Choir



**Mary Frances
Bartsch**

Subiaco, Arkansas

ENTER: OCTOBER 28, 1943

DEATH: JUNE 29, 2013

MISSION WORK

Catechetical,
Group Work



**Roberta
Baschnagel**

Chicago, Illinois

ENTER: SEPTEMBER 3, 1936

DEATH: MARCH 31, 1967

MISSION WORK

Catechetical



**Helen Marie
Beall**

Waukegan, Illinois

ENTER: SEPTEMBER 4, 1930

DEATH: SEPTEMBER 16, 2002

MISSION WORK

Catechetical,
Social Work



**Marie
Benes**

Flossmoor, Illinois

ENTER: SEPTEMBER 27, 1919

DEATH: MAY 8, 1948

MISSION WORK

Catechetical,
Leadership

OUR LADY OF VICTORY MISSIONARY SISTERS



**Evelyn
Benton**

Pensacola, Florida

ENTER: JANUARY 16, 1925
DEATH: SEPTEMBER 23, 1968

MISSION WORK
Catechetical



**Louise Marie
Berard**

Joliet, Illinois

ENTER: SEPTEMBER 20, 1932
DEATH: MARCH 30, 2006

MISSION WORK
Catechetical



**Loretta Marie
Bergerie**

New Iberia, Louisiana

ENTER: JULY 14, 1927
DEATH: MARCH 13, 1965

MISSION WORK
Catechetical



**Bernice
Bien**

Detroit, Michigan

ENTER: AUGUST 27, 1935
DEATH: MARCH 1, 1977

MISSION WORK
Pastoral, Ecumenical,
Migrant Work



**Alma
Bill**

Arcadia, Wisconsin

ENTER: OCTOBER 29, 1947

MISSION WORK
Religious Education,
Author of Catechetical Texts,
Congregation Leadership



**Mary Liguori
Binz**

Brooklyn, New York

ENTER: JANUARY 30, 1937
DEATH: MARCH 18, 1971

MISSION WORK
Catechetical

OUR LADY OF VICTORY MISSIONARY SISTERS



**Anna
Blumenkemper**

Lemay, Missouri

ENTER: OCTOBER 28, 1939

DEATH: AUGUST 4, 1973

MISSION WORK

Catechetical



**Marie
Bodin**

Sour Lake, Texas

ENTER: MAY 9, 1922

DEATH: OCTOBER 7, 1939

MISSION WORK

Catechetical,
Leadership



**Veronica
Bradway**

Detroit, Michigan

ENTER: OCTOBER 30, 1940

DEATH: APRIL 11, 1991

MISSION WORK

Catechetical,
Diocesan CCD



**Mary Catherine
Brohman**

Grand Forks, North Dakota

ENTER: JUNE 30, 1926

DEATH: FEBRUARY 28, 1995

MISSION WORK

Catechetical, Teacher formation,
Migrant Work, Adult Education



**Hildegard
Bromenschenkel**

St. Cloud, Minnesota

ENTER: FEBRUARY 2, 1933

DEATH: JANUARY 9, 1983

MISSION WORK

Catechetical,
Social Work



**Jean
Brosnan**

Pittsburgh, Pennsylvania

ENTER: AUGUST 28, 1934

DEATH: DECEMBER 8, 2008

MISSION WORK

Treasurer, Social Work,
Catechetical, Ecumenical

OUR LADY OF VICTORY MISSIONARY SISTERS



**Mary Edna
Butler**

Louisville, Kentucky
ENTER: OCTOBER 30, 1940
DEATH: JANUARY 30, 2013

MISSION WORK
Religious Education,
Jail Ministry, Bolivia mission



**Mary Gerard
Byrne**

St. Louis, Missouri
ENTER: FEBRUARY 4, 1932
DEATH: MARCH 27, 1976

MISSION WORK
Catechetical



**Margaret
Campbell**

Amherst, Wisconsin
ENTER: JUNE 30, 1926
DEATH: MARCH 6, 1992

MISSION WORK
Catechetical, Parish Work,
College Instructor,
National CCD Office



**Dolores
Carlos**

Selma, California
ENTER: JANUARY 3, 1947
DEATH: AUGUST 6, 2010

MISSION WORK
Catechetical, Social Services,
Hispanic Ministry



**Alodia
Carney**

Detroit, Michigan
ENTER: OCTOBER 27, 1949
DEATH: NOVEMBER 23, 2020

MISSION WORK
Catechetical, Religious
Education, Teacher Formation,
Pastoral



**Helena
Carney**

Detroit, Michigan
ENTER: OCTOBER 27, 1949
DEATH: APRIL 14, 2014

MISSION WORK
Catechetical, Diocesan Councils,
Pastoral

OUR LADY OF VICTORY MISSIONARY SISTERS



**Dolores
Chenot**

St. Louis, Missouri

ENTER: OCTOBER 5, 1950

DEATH: JUNE 5, 1995

MISSION WORK

Catechetical,
Vocation Minister



**Marie Jane
Chettle**

St. Louis, Missouri

ENTER: AUGUST 31, 1938

DEATH: DECEMBER 2, 2002

MISSION WORK

Catechetical, Bookkeeping,
Clinic Work



**Mary Jane
Cholewinski**

Knox, Indiana

ENTER: OCTOBER 27, 1945

DEATH: JANUARY 11, 2003

MISSION WORK

Catechetical, Teacher Formation,
Group Work



**Geraldine
Christ**

Chambersburg, Pennsylvania

ENTER: JANUARY 30, 1940

DEATH: MARCH 3, 1994

MISSION WORK

Catechetical, Teacher Formation,
Therapist



**Josephine
Cima**

Marguerite, Pennsylvania

ENTER: FEBRUARY 3, 1930

DEATH: DECEMBER 25, 1980

MISSION WORK

Catechetical,
Migrant Ministry



**Mary Eleanor
Clements**

Okeechobee, Florida

ENTER: MAY 17, 1926

DEATH: SEPTEMBER 13, 1991

MISSION WORK

Catechetical,
Nursing

OUR LADY OF VICTORY MISSIONARY SISTERS



**Elizabeth Ann
Clifford**

Chillicothe, Ohio

ENTER: SEPTEMBER 5, 1929
DEATH: NOVEMBER 4, 1993

MISSION WORK

Catechetical, Editor,
General Counselor,
General Secretary



**Eleanor
Cogan**

Dayton, Ohio

ENTER: APRIL 13, 1925
DEATH: MAY 21, 1958

MISSION WORK

Catechetical



**Helen
Collis**

Los Angeles, California

ENTER: FEBRUARY 8, 1933
DEATH: MAY 23, 2011

MISSION WORK

Catechetical,
Nursing



**Mary Rose
Conroy**

St. Louis, Missouri

ENTER: AUGUST 28, 1936
DEATH: NOVEMBER 25, 1993

MISSION WORK

Catechetical,
Administration



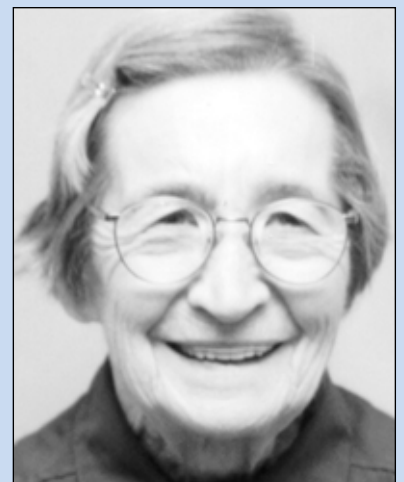
**Mary Colette
Corcoran**

Chicago, Illinois

ENTER: OCTOBER 28, 1943
DEATH: NOVEMBER 22, 1996

MISSION WORK

Catechetical, Social Work,
Nursing



**Camilla
Cray**

Barrington, Illinois

ENTER: OCTOBER 28, 1941
DEATH: JANUARY 24, 2001

MISSION WORK

Catechetical,
Nursing

OUR LADY OF VICTORY MISSIONARY SISTERS



**Kathleen
Cummings**

Jackson, Michigan

ENTER: JANUARY 6, 1954

MISSION WORK

Catechetical,
General Treasurer



**Marjorie
Curran**

Brooklyn, Iowa

ENTER: SEPTEMBER 6, 1950

DEATH: APRIL 27, 2012

MISSION WORK

Catechetical,
Social Services



**Helen
Danenberg**

Grand Rapids, Michigan

ENTER: SEPTEMBER 6, 1954

DEATH: JANUARY 8, 1993

MISSION WORK

Catechetical,
Social Work



**Adriana
Daskoski**

Winona, Minnesota

ENTER: SEPTEMBER 2, 1933

DEATH: SEPTEMBER 10, 2001

MISSION WORK

Catechetical,
Teacher Formation



**Evelyn Marie
Davis**

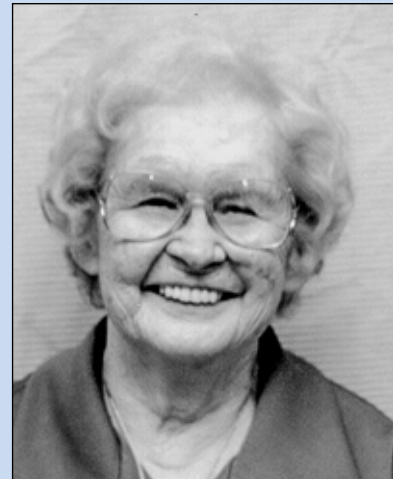
Mt. Clements, Michigan

ENTER: OCTOBER 28, 1941

DEATH: MARCH 22, 2010

MISSION WORK

Catechetical



**Denise
Dean**

St. Louis, Missouri

ENTER: FEBRUARY 4, 1933

DEATH: FEBRUARY 20, 2005

MISSION WORK

Catechetical,
Social Work

OUR LADY OF VICTORY MISSIONARY SISTERS



**Madeline
DeGroot**

Little Chute, Michigan
ENTER: AUGUST 28, 1935
DEATH: MAY 29, 2008

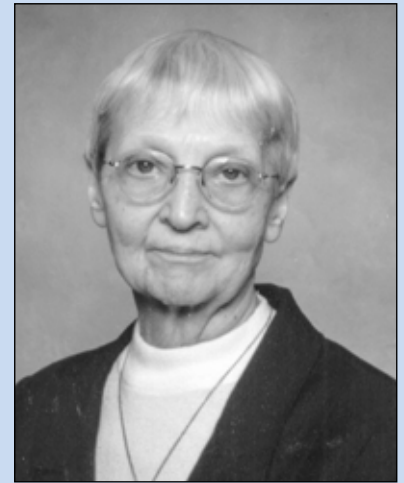
MISSION WORK
Catechetical, Social Work,
Nursing



**Chrysostom
Deliman**

Perth Amboy, New Jersey
ENTER: SEPTEMBER 6, 1955
DEATH: SEPTEMBER 29, 1982

MISSION WORK
Catechetical, Diocesan CCD,
Group Work



**Irene
DeMeulenaere**

Victor, Iowa
ENTER: OCTOBER 27, 1949
DEATH: AUGUST 17, 2013

MISSION WORK
Catechetical,
Pastoral Ministry



**Marie Vianney
Denzig**

Toledo, Ohio
ENTER: APRIL 28, 1927
DEATH: OCTOBER 8, 1956

MISSION WORK
Catechetical



**Mary Barbara
Desch**

Topeka, Kansas
ENTER: OCTOBER 28, 1943
DEATH: SEPTEMBER 29, 2004

MISSION WORK
Catechetical,
Diocesan CCD



**Mary Ellen
Descourouez**

Geneva, Illinois
ENTER: JANUARY 6, 1953
DEATH: OCTOBER 9, 2021

MISSION WORK
Catechetical, Pastoral,
Vocation-Formation Director,
Congregation Leadership

OUR LADY OF VICTORY MISSIONARY SISTERS



**Mary Angela
Dickebohm**

Lafayette, Indiana

ENTER: DECEMBER 4, 1926

DEATH: JULY 4, 1983

MISSION WORK

Catechetical,
Social Work



**Emma Elizabeth
Dietz**

Ridgway, Illinois

ENTER: MARCH 24, 1926

DEATH: AUGUST 18, 1978

MISSION WORK

Catechetical, Census Work,
Home Visiting



**Bernadette
Doiron**

Old Town, Maine

ENTER: FEBRUARY 4, 1931

DEATH: JANUARY 25, 1991

MISSION WORK

Catechetical



**Mary Ellen
Dooley**

Salamanca, New York

ENTER: OCTOBER 29, 1943

DEATH: APRIL 25, 1997

MISSION WORK

Catechetical,
Nursing



**Mary
Doran**

Ludlow, Kentucky

ENTER: JANUARY 6, 1953

DEATH: SEPTEMBER 15, 2019

MISSION WORK

Catechetical,
Congregation Leadership,
Outreach to Farm Workers



**Mary Salome
Dorava**

Dodge, Wisconsin

ENTER: JANUARY 21, 1926

DEATH: NOVEMBER 5, 1956

MISSION WORK

Catechetical

OUR LADY OF VICTORY MISSIONARY SISTERS



**Bertha
Dorrmann**

Cincinnati, Ohio

ENTER: FEBRUARY 10, 1928
DEATH: NOVEMBER 15, 1983

MISSION WORK

Catechetical,
Nursing



**Virginia (Ginger)
Downey**

Shoshoni, Wyoming

ENTER: SEPTEMBER 27, 1986

MISSION WORK

Religious Education, Liturgy,
Vocation Minister,
Congregation Leadership



**Julia
Doyle**

Chicago, Illinois

ENTER: SEPTEMBER 13, 1919
DEATH: OCTOBER 21, 1947

MISSION WORK

Catechetical,
Leadership



**Miriam
Doyle**

Wilmette, Illinois

ENTER: AUGUST 28, 1934
DEATH: MAY 1, 1989

MISSION WORK

Catechetical,
Diocesan CCD



**Marion
Drexler**

Hartford, Connecticut

ENTER: OCTOBER 30, 1925
DEATH: AUGUST 7, 1990

MISSION WORK

Catechetical, Social Work,
Group Work



**Margaret Mary
Dunsmore**

Duluth, Minnesota

ENTER: JULY 14, 1928
DEATH: FEBRUARY 20, 1987

MISSION WORK

Catechetical,
General Treasurer

OUR LADY OF VICTORY MISSIONARY SISTERS



**Bernarda
Durkin**

Chicago, Illinois

ENTER: FEBRUARY 8, 1932
DEATH: APRIL 20, 1985

MISSION WORK

Catechetical,
Social Work



**Mary Genevieve
Dziejcz**

Chicago, Illinois

ENTER: SEPTEMBER 2, 1931
DEATH: AUGUST 27, 1991

MISSION WORK

Catechetical,
Victory Noll Junior College
faculty



**Theresa
Egidy**

Greeley, Kansas

ENTER: FEBRUARY 6, 1932
DEATH: SEPTEMBER 26, 2009

MISSION WORK

Catechetical, Teacher Formation,
Adult Education



**Ruth
Ellert**

Fort Wayne, Indiana

ENTER: SEPTEMBER 6, 1951
DEATH: FEBRUARY 3, 2020

MISSION WORK

Catechetical,
Adult Formation



**Marie Celine
Ernst**

Milwaukee, Wisconsin

ENTER: OCTOBER 27, 1948
DEATH: JULY 31, 2005

MISSION WORK

Catechetical,
Social Work



**Sharon Rose
Eshleman**

Adrian, Minnesota

ENTER: SEPTEMBER 5, 1959
DEATH: FEBRUARY 27, 2021

MISSION WORK

Catechetical, Librarian,
Pastoral Ministry,
Religious Education

OUR LADY OF VICTORY MISSIONARY SISTERS



**Bertina
Espinoza**

Ocate, New Mexico
ENTER: JULY 14, 1927
DEATH: MAY 11, 1994

MISSION WORK
Catechetical



**Elizabeth Ann
Evans**

Omaha, Nebraska
ENTER: FEBRUARY 2, 1946
DEATH: MAY 29, 1994

MISSION WORK
Catechetical,
Librarian



**Carmela
Farley**

Honolulu, Hawaii
ENTER: OCTOBER 30, 1947
DEATH: APRIL 11, 2013

MISSION WORK
Catechetical, Social Work,
Nursing



**Celestine
Feik**

Humphrey, Nebraska
ENTER: MARCH 13, 1938
DEATH: DECEMBER 11, 2000

MISSION WORK
Catechetical, Teacher Formation,
Social Work



**Roselene
Flaherty**

Louisville, Kentucky
ENTER: OCTOBER 30, 1939
DEATH: APRIL 17, 2001

MISSION WORK
Catechetical, Social Work,
Adult Education



**Helen
Flaspohler**

Batesville, Indiana
ENTER: OCTOBER 28, 1939
DEATH: NOVEMBER 23, 1992

MISSION WORK
Catechetical,
Congregation Leadership,
Formation

OUR LADY OF VICTORY MISSIONARY SISTERS



**Guadalupe
Flores-Ocaña**

Colquiri LaPaz, Bolivia
ENTER: SEPTEMBER 22, 1997

MISSION WORK

Religious Education Youth
Ministry, Hispanic Faith
Formation Coordinator



**Valeria
Foltz**

Humphrey, Nebraska
ENTER: OCTOBER 28, 1941

MISSION WORK

Religious Education,
Home Visiting, Creator of Crafts



**Regina
Foppe**

Breese, Illinois
ENTER: SEPTEMBER 17, 1932
DEATH: NOVEMBER 29, 1991

MISSION WORK

Catechetical, Social Work,
Counseling



**Mary Paula
Fortier**

New Castle, Indiana
ENTER: OCTOBER 27, 1945
DEATH: MARCH 5, 2014

MISSION WORK

Catechetical,
Social Work



**Benigna
Furst**

Corning, Kansas
ENTER: MAY 22, 1925
DEATH: DECEMBER 15, 1985

MISSION WORK

Catechetical,
Formation



**Ellen
Gallagher**

St. Louis, Missouri
ENTER: AUGUST 30, 1935
DEATH: MAY 1, 1994

MISSION WORK

Catechetical

OUR LADY OF VICTORY MISSIONARY SISTERS

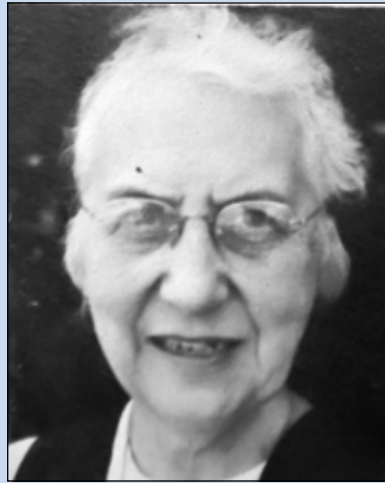


**Agnes
Ganse**

Lancaster, Pennsylvania
ENTER: FEBRUARY 4, 1936
DEATH: AUGUST 8, 2008

MISSION WORK

Catechetical,
Printing Shop



**Catherine Marie
Ganse**

Lancaster, Pennsylvania
ENTER: FEBRUARY 9, 1929
DEATH: MAY 5, 2000

MISSION WORK

Catechetical,
Social Work



**Florence
Garbacz**

Cleveland, Ohio
ENTER: JANUARY 3, 1946
DEATH: FEBRUARY 21, 2007

MISSION WORK

Catechetical, Social Work,
Pastoral Ministry



**Antonia
Garcia**

Fort Collins, Colorado
ENTER: OCTOBER 28, 1939
DEATH: JULY 26, 1963

MISSION WORK

Catechetical



**Mary Eva
Geiskopf**

Milwaukee, Wisconsin
ENTER: SEPTEMBER 20, 1932
DEATH: JANUARY 9, 1997

MISSION WORK

Catechetical,
Diocesan CCD office



**Eleanor
Gerhart**

St. Louis, Missouri
ENTER: OCTOBER 28, 1928
DEATH: APRIL 30, 1989

MISSION WORK

Catechetical

OUR LADY OF VICTORY MISSIONARY SISTERS



**Mary Bernard
Gerhart**

St. Louis, Missouri

ENTER: FEBRUARY 4, 1935
DEATH: DECEMBER 12, 1984

MISSION WORK

Catechetical



**Agatha
Gerlits**

York, Nebraska

ENTER: AUGUST 28, 1936
DEATH: AUGUST 12, 2010

MISSION WORK

Catechetical,
Census Work



**Teresa
Gerlits**

Denver, Colorado

ENTER: OCTOBER 28, 1942
DEATH: OCTOBER 11, 2007

MISSION WORK

Catechetical,
Adult Education



**Jo Noreen
Gildea**

Elkhart, Indiana

ENTER: OCTOBER 27, 1942
DEATH: NOVEMBER 2, 1993

MISSION WORK

Catechetical, Librarian,
Social Work



**Rose Frances
Gilmore**

Butte, Montana

ENTER: SEPTEMBER 6, 1956
DEATH: DECEMBER 18, 2019

MISSION WORK

Catechetical,
Congregation Leadership,
Religious Education



**Mary Joan
Ginsterblum**

Meyer, Iowa

ENTER: JANUARY 25, 1939
DEATH: DECEMBER 29, 2021

MISSION WORK

Catechetical, Physical Therapist,
Wood Carver

OUR LADY OF VICTORY MISSIONARY SISTERS



**Mechtilde
Gogel**

Mariah Hill, Indiana
ENTER: OCTOBER 28, 1941
DEATH: JULY 1, 2013

MISSION WORK
Catechetical,
Social Work



**Monica
Gogin**

Osnabrock, North Dakota
ENTER: MARCH 12, 1938
DEATH: APRIL 26, 1997

MISSION WORK
Catechetical



**Antoinette
Golabowski**

South Bend, Indiana
ENTER: JANUARY 6, 1953
DEATH: MAY 9, 2008

MISSION WORK
Catechetical,
Social Work



**Grace
Golenberke**

Big Beaver, Michigan
ENTER: OCTOBER 27, 1948
DEATH: JANUARY 13, 2014

MISSION WORK
Catechetical, Teacher for Adult
Native Americans



**Victoria
Grabler**

Milwaukee, Wisconsin
ENTER: NOVEMBER 27, 1946
DEATH: JULY 29, 2008

MISSION WORK
Catechetical,
Librarian



**Jeannette
Gratton**

Odgensburg, New York
ENTER: SEPTEMBER 5, 1925
DEATH: SEPTEMBER 14, 1976

MISSION WORK
Catechetical, Teacher Formation,
Adult Education

OUR LADY OF VICTORY MISSIONARY SISTERS



**Teresita
Grzeslo**

Chicago, Illinois

ENTER: NOVEMBER 27, 1946

DEATH: JUNE 6, 1995

MISSION WORK

Catechetical



**Margaret
Gutierrez**

Durate, California

ENTER: FEBRUARY 16, 1934

DEATH: MARCH 18, 2010

MISSION WORK

Catechetical,
Social Work



**Maria Anita
Gutierrez**

Los Tanos, New Mexico

ENTER: JULY 14, 1927

DEATH: DECEMBER 24, 1986

MISSION WORK

Catechetical



**Mercedes
Gutierrez**

Colonias, New Mexico

ENTER: OCTOBER 28, 1928

DEATH: JUNE 20, 1989

MISSION WORK

Catechetical,
Home Visiting



**Beatrice
Haines**

Goshen, Indiana

ENTER: SEPTEMBER 5, 1962

MISSION WORK

Co-Founder of Julia Center,
Religious Education,
Congregation Leadership



**Monica
Haines**

Goshen, Indiana

ENTER: OCTOBER 27, 1948

DEATH: NOVEMBER 23, 2020

MISSION WORK

Catechetical,
Adult Formation

OUR LADY OF VICTORY MISSIONARY SISTERS



**Jeanette
Halbach**

Primghar, Iowa
ENTER: SEPTEMBER 6, 1955

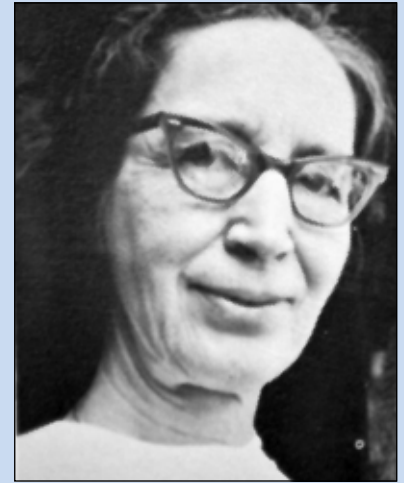
MISSION WORK
Director of Peace and Justice
Office, Co-Founder of Julia Center,
Congregation Leadership



**Loretto
Hall**

Great Bend, Kansas
ENTER: AUGUST 3, 1937
DEATH: JANUARY 20, 1989

MISSION WORK
Catechetical,
Social Work



**Virginia
Hamilton**

Owensboro, Kentucky
ENTER: OCTOBER 30, 1940
DEATH: APRIL 20, 1997

MISSION WORK
Catechetical,
Home Visiting



**Elizabeth
Hann**

Bend, Illinois
ENTER: OCTOBER 21, 1927
DEATH: OCTOBER 21, 2001

MISSION WORK
Catechetical, Census Work,
Home Visiting



**Margaret Ann
Harrison**

Chicago, Illinois
ENTER: FEBRUARY 3, 1931
DEATH: JULY 3, 1986

MISSION WORK
Catechetical,
General Counselor



**Clarissa
Heckler**

Milwaukee, Wisconsin
ENTER: OCTOBER 27, 1944
DEATH: SEPTEMBER 7, 1995

MISSION WORK
Catechetical,
Secretarial

OUR LADY OF VICTORY MISSIONARY SISTERS



Mary Magdalen Heim

Philadelphia, Pennsylvania

ENTER: OCTOBER 28, 1942
DEATH: FEBRUARY 5, 2014

MISSION WORK

Catechetical, Home Visiting,
Census Work



Adelle Heintz

Neosho, Wisconsin

ENTER: SEPTEMBER 4, 1929
DEATH: JANUARY 7, 1982

MISSION WORK

Catechetical



Veronica Hirjak

Taylor Springs, Illinois

ENTER: AUGUST 28, 1935
DEATH: APRIL 16, 2008

MISSION WORK

Catechetical,
Group Work



Anna Hitzler

Lincoln, Nebraska

ENTER: SEPTEMBER 19, 1932
DEATH: APRIL 6, 1995

MISSION WORK

Catechetical,
Teacher of Religion to the Deaf



Rose Elizabeth Hohner

Wheatfield, Indiana

ENTER: AUGUST 29, 1934
DEATH: APRIL 9, 2012

MISSION WORK

Catechetical, Census Work,
Nursing



Rose Hornby

Siberia, Indiana

ENTER: FEBRUARY 8, 1930
DEATH: MARCH 18, 1988

MISSION WORK

Catechetical, Librarian,
Music Teacher

OUR LADY OF VICTORY MISSIONARY SISTERS



**Mary Lucille
Huegel**

North Washington, Iowa
ENTER: OCTOBER 26, 1945
DEATH: AUGUST 28, 1999

MISSION WORK
Catechetical,
Librarian



**Bridget
Hynes**

Loughanafilan, County Clare,
Ireland
ENTER: OCTOBER 6, 1924
DEATH: APRIL 24, 1986

MISSION WORK
Nursing,
Home Visiting



**Carolyn
Issenmann**

Hamilton, Ohio
ENTER: OCTOBER 28, 1942
DEATH: DECEMBER 4, 2013

MISSION WORK
Religious Education,
Archives, Teacher Training



**Alice Marie
James**

Cincinnati, Ohio
ENTER: AUGUST 28, 1936
DEATH: JULY 18, 1971

MISSION WORK
Catechetical



**Mary Margaret
Javaux**

St. Louis, Missouri
ENTER: OCTOBER 28, 1927
DEATH: MAY 5, 1993

MISSION WORK
Catechetical,
Social Work



**Catherine M.
Johnson**

Fort Wayne, Indiana
ENTER: JANUARY 31, 1943
DEATH: JUNE 4, 2010

MISSION WORK
Catechetical, Pastoral,
Counseling, Chaplain

OUR LADY OF VICTORY MISSIONARY SISTERS



**Margaret
Kaiser**

St. Louis, Missouri

ENTER: AUGUST 20, 1931
DEATH: FEBRUARY 12, 1981

MISSION WORK

Catechetical,
Newman Center



**Rose Ann
Kaiser**

Jefferson City, Missouri

ENTER: SEPTEMBER 6, 1960

MISSION WORK

Religious Education,
Pastoral Ministry,
Social Justice Advocacy



**Rose Mary
Kaiser**

Hecker, Illinois

ENTER: AUGUST 3, 1925
DEATH: MAY 29, 1988

MISSION WORK

Catechetical,
Home Visiting



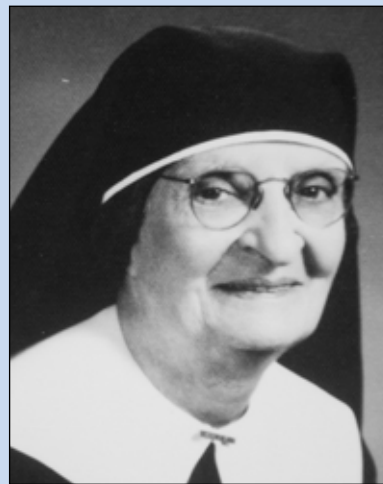
**Mary
Karl**

Peoria, Illinois

ENTER: FEBRUARY 7, 1933
DEATH: JANUARY 28, 2013

MISSION WORK

Catechetical,
Secretarial



**Ida Ann
Keller**

Upper Sandusky, Ohio

ENTER: DECEMBER 7, 1924
DEATH: SEPTEMBER 2, 1978

MISSION WORK

Catechetical,
Director of Juniorate



**Mary Denis
Kelliher**

Minneapolis, Minnesota

ENTER: FEBRUARY 16, 1934
DEATH: MARCH 22, 1984

MISSION WORK

Catechetical,
Social Work

OUR LADY OF VICTORY MISSIONARY SISTERS



**Ann Shirley
Kelly**

Belle Plaine, Minnesota
ENTER: OCTOBER 27, 1945
DEATH: JULY 25, 2012

MISSION WORK
Catechetical, Pastoral Ministry,
Bolivia Mission



**Mary Alice
Kelly**

DuBois, Pennsylvania
ENTER: AUGUST 28, 1935
DEATH: NOVEMBER 27, 1976

MISSION WORK
Catechetical,
Social Services



**Dennis
Kerr**

Detroit, Michigan
ENTER: OCTOBER 30, 1947

MISSION WORK
Religious Education,
Home Visiting, Social Services



**Isabelle
Kestler**

Chicago, Illinois
ENTER: OCTOBER 30, 1940
DEATH: AUGUST 11, 2003

MISSION WORK
Catechetical,
Social Work



**Justine
Kiefer**

Chicago, Illinois
ENTER: AUGUST 31, 1938
DEATH: JANUARY 10, 2014

MISSION WORK
Catechetical, Leadership Team,
Formation Director, Tutor,
Secretarial



**Marie Arteal
Killian**

Lafayette, Indiana
ENTER: SEPTEMBER 1, 1933
DEATH: AUGUST 9, 1993

MISSION WORK
Catechetical, Youth Center,
Psychiatric Technologist,
Chaplain

OUR LADY OF VICTORY MISSIONARY SISTERS



**Geraldine
Kirkessner**

Lebanon, Pennsylvania

ENTER: OCTOBER 27, 1945
DEATH: MARCH 29, 2011

MISSION WORK

Catechetical, Diocesan CCD,
Chaplain, Pastoral,
Adult Education



**Patricia
Knapp**

South Haven, Michigan

ENTER: OCTOBER 30, 1940
DEATH: JUNE 13, 2019

MISSION WORK

Catechetical, Formation,
Hospital Visiting, Chaplain,
Pastoral Ministry



**Karen
Knecht**

Louisville, Kentucky

ENTER: SEPTEMBER 6, 1955
DEATH: MARCH 15, 2002

MISSION WORK

Catechetical, Formation,
Adult Education, Pastoral,
Vocations Minister



**Doris
Koenig**

Detroit, Michigan

ENTER: JANUARY 31, 1945
DEATH: AUGUST 9, 1996

MISSION WORK

Catechetical



**Josephine
Konrad**

Dingolfing, Bavaria, Germany

ENTER: NOVEMBER 6, 1944
DEATH: SEPTEMBER 24, 2007

MISSION WORK

Catechetical, Diocesan CCD,
Youth Work, Community Work



**Joseph Ann
Kostka**

Arlington Heights, Illinois

ENTER: OCTOBER 5, 1950
DEATH: MAY 7, 2020

MISSION WORK

Catechetical

OUR LADY OF VICTORY MISSIONARY SISTERS



**Mary Dolores
Kotas**

Chicago, Illinois
ENTER: OCTOBER 28, 1942
DEATH: OCTOBER 19, 2010

MISSION WORK
Catechetical,
Pastoral



**Frances
Kowalewski**

Milwaukee, Wisconsin
ENTER: FEBRUARY 17, 1934
DEATH: MAY 2, 1998

MISSION WORK
Catechetical,
Social Work



**Agnes
Kozla**

Chicago, Illinois
ENTER: AUGUST 14, 1924
DEATH: NOVEMBER 4, 1995

MISSION WORK
Catechetical,
Social Work



**Marian
Kozlowski**

Chicago, Illinois
ENTER: SEPTEMBER 10, 1964
DEATH: MAY 9, 2006

MISSION WORK
Catechetical, Social Work,
Pastoral, Chaplain



**Mary Ruth
Kramer**

Coldwater, Ohio
ENTER: OCTOBER 28, 1943
DEATH: DECEMBER 20, 2008

MISSION WORK
Catechetical, Teacher Formation,
Diocesan CCD, Pastoral,
Caregiver



**Martin
Ksycki**

DuBois, Illinois
ENTER: OCTOBER 27, 1948
DEATH: DECEMBER 10, 2017

MISSION WORK
Diocesan CCD, Youth Minister,
Director of Religious Education,
Adult Education

OUR LADY OF VICTORY MISSIONARY SISTERS



**Mary Ida
Kuntz**

Batesville, Indiana

ENTER: SEPTEMBER 3, 1926

DEATH: APRIL 20, 1971

MISSION WORK

Catechetical



**Rosario
Lara**

San Diego, California

ENTER: AUGUST 28, 1935

DEATH: FEBRUARY 7, 2014

MISSION WORK

Catechetical, Diocesan CCD,
Pastoral, Jail Ministry



**Catherine Ann
Larsen**

Green Bay, Wisconsin

ENTER: SEPTEMBER 3, 1930

DEATH: MAY 4, 1968

MISSION WORK

Catechetical



**Dorothy
Leahy**

Kansas City, Kansas

ENTER: AUGUST 9, 1926

DEATH: JANUARY 9, 1989

MISSION WORK

Catechetical,
Diocesan CCD



**Benedict Joseph
LeBlanc**

Burlington, Vermont

ENTER: SEPTEMBER 6, 1954

DEATH: FEBRUARY 10, 1963

MISSION WORK

Catechetical



**Vivian
Lembeck**

St. Louis, Missouri

ENTER: AUGUST 28, 1935

DEATH: APRIL 27, 2002

MISSION WORK

Catechetical, Census Work,
Cook

OUR LADY OF VICTORY MISSIONARY SISTERS



**Dorothy Ann
Lengerich**

Decatur, Indiana

ENTER: AUGUST 29, 1934
DEATH: DECEMBER 8, 2014

MISSION WORK

Catechetical, Home Visiting,
Choir, Music



**Mary Rosella
Lengerich**

Decatur, Indiana

ENTER: FEBRUARY 4, 1932
DEATH: OCTOBER 5, 2003

MISSION WORK

Catechetical,
Pastoral, Evangelization



**Magdalene
Lenges**

Evansville, Indiana

ENTER: SEPTEMBER 7, 1931
DEATH: NOVEMBER 8, 1991

MISSION WORK

Catechetical, Teacher Formation,
Parent Education, Librarian



**Mary Clare
Leutenegger**

Omaha, Nebraska

ENTER: FEBRUARY 14, 1926
DEATH: JULY 11, 1956

MISSION WORK

Catechetical,
Leadership



**Kathleen
Leven**

Danville, Illinois

ENTER: APRIL 24, 1928
DEATH: JANUARY 25, 1994

MISSION WORK

Catechetical



**Constance
Lewandowski**

Milwaukee, Wisconsin

ENTER: SEPTEMBER 6, 1951

MISSION WORK

Religious Education,
Parish Minister, Companion and
Caregiver to Elderly

OUR LADY OF VICTORY MISSIONARY SISTERS



**Callista
Ley**

Pittsburgh, Pennsylvania

ENTER: AUGUST 31, 1938
DEATH: SEPTEMBER 21, 2010

MISSION WORK

Catechetical, Health Care,
Social Work



**Edna
Like**

Farina, Illinois

ENTER: APRIL 26, 1924
DEATH: NOVEMBER 15, 1973

MISSION WORK

Catechetical,
Social Work



**Leora
Linnenkugel**

Toledo, Ohio

ENTER: AUGUST 10, 1997

MISSION WORK

Religious Education,
Immigration Outreach,
Congregation Leadership



**Florentine
Lohr**

Clark, South Dakota

ENTER: OCTOBER 28, 1939
DEATH: APRIL 23, 2003

MISSION WORK

Catechetical, Superior General,
Social Work



**Madelon
LoRang**

McGregor, Iowa

ENTER: JANUARY 20, 1925
DEATH: AUGUST 4, 1998

MISSION WORK

Catechetical, Home Visiting,
Jail Ministry



**Betty
Lorenz**

Hopkins, Minnesota

ENTER: OCTOBER 29, 1940
DEATH: MARCH 8, 2015

MISSION WORK

Catechetical, Home Visiting,
Caregiver, Pastoral

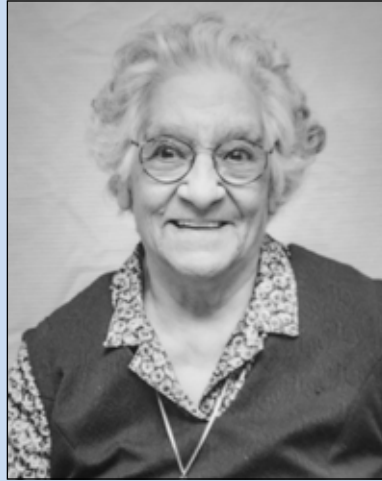
OUR LADY OF VICTORY MISSIONARY SISTERS



**Florence
Luechtefeld**

St. Libory, Illinois
ENTER: SEPTEMBER 2, 1931
DEATH: JUNE 15, 2005

MISSION WORK
Catechetical,
Religious Education,
Pastoral Minister



**Trinidad
Luna**

Tierra Amarillo, New Mexico
ENTER: FEBRUARY 7, 1932
DEATH: MAY 4, 2007

MISSION WORK
Catechetical, Home Health Aide,
Pastoral



**Bernardine
Mabrey**

Fort Wayne, Indiana
ENTER: OCTOBER 27, 1948
DEATH: JUNE 20, 2005

MISSION WORK
Catechetical, Pastoral, RCIA,
Music Teacher,
Spiritual Direction



**Mary Josephine
Maes**

Santa Fe, New Mexico
ENTER: SEPTEMBER 6, 1950
DEATH: MARCH 5, 2021

MISSION WORK
Catechetical, Pastoral,
Youth Ministry,
Adult Education



**William Ann
Maloney**

Hampton, Virginia
ENTER: OCTOBER 6, 1951
DEATH: FEBRUARY 10, 2008

MISSION WORK
Catechetical, Census Work,
Home Visiting, Pastoral



**Mary Bernarda
Marquez**

Duran, New Mexico
ENTER: FEBRUARY 7, 1933
DEATH: SEPTEMBER 23, 2010

MISSION WORK
Catechetical,
Panama consultant,
Pastoral, Translator

OUR LADY OF VICTORY MISSIONARY SISTERS



**Lucille
Martinez**

Chimayo, New Mexico
ENTER: SEPTEMBER 8, 1964

MISSION WORK

Religious Education, Parish
Work, Congregation Leadership



**Martina
Martinez**

Espanola, New Mexico
ENTER: MARCH 11, 1926
DEATH: FEBRUARY 5, 1981

MISSION WORK

Catechetical, Social Work



**Angela
Marzen**

Charles City, Iowa
ENTER: SEPTEMBER 6, 1955
DEATH: JULY 6, 1996

MISSION WORK

Catechetical, Leadership



**Mary Adele
Massaro**

Poggio Picenze, Italy
ENTER: OCTOBER 27, 1945
DEATH: OCTOBER 27, 2019

MISSION WORK

Catechetical, Pastoral,
Chancery office



**Lorraine
Masters**

Humbolt, South Dakota
ENTER: OCTOBER 26, 1945
DEATH: MAY 15, 2015

MISSION WORK

Catechetical, Administration,
Pastoral,
Native American ministry



**Mary Eileen
Masterson**

Mineral, Kansas
ENTER: FEBRUARY 8, 1932
DEATH: MARCH 31, 1988

MISSION WORK

Catechetical, Migrant Work,
Diocesan Coordinator

OUR LADY OF VICTORY MISSIONARY SISTERS



**Clarice
May**

Brooklyn, New York

ENTER: OCTOBER 28, 1939

DEATH: JANUARY 5, 1999

MISSION WORK

Catechetical,
Secretarial



**Rose Ann
McBride**

Chicago, Illinois

ENTER: SEPTEMBER 19, 1932

DEATH: NOVEMBER 28, 1947

MISSION WORK

Catechetical



**Rose Anthony
McClosky**

San Antonio, Texas

ENTER: NOVEMBER 27, 1946

DEATH: DECEMBER 8, 2013

MISSION WORK

Catechetical,
Director of Religious Education,
Pastoral



**Effie
McConnell**

Bloomington, Indiana

ENTER: FEBRUARY 9, 1928

DEATH: OCTOBER 28, 1994

MISSION WORK

Catechetical,
Maintenance



**Mary Frances
Therese McConville**

Hawk Run, Pennsylvania

ENTER: OCTOBER 30, 1925

DEATH: DECEMBER 1, 1984

MISSION WORK

Catechetical,
Community Administration



**Barbara
McCord**

St. Louis, Missouri

ENTER: JANUARY 30, 1937

DEATH: MARCH 20, 2013

MISSION WORK

Catechetical, Social Work,
Pastoral, Chaplain, Finance

OUR LADY OF VICTORY MISSIONARY SISTERS



**Lurlien
McCoy**

Hastings, Minnesota

ENTER: OCTOBER 28, 1939
DEATH: AUGUST 23, 2001

MISSION WORK

Catechetical,
Director of Religious Education,
Music



**Francesca
McGarry**

Euclid, Ohio

ENTER: FEBRUARY 4, 1946
DEATH: FEBRUARY 11, 2020

MISSION WORK

Catechetical, Social Work,
Formation, Dean of Juniors,
Diocesan Director of Asian Cultures



**Delores
McGinley**

Philadelphia, Pennsylvania

ENTER: NOVEMBER 26, 1946
DEATH: APRIL 1, 2013

MISSION WORK

Catechetical, Director of
Religious Education, Pastoral,
Home Visiting, Consultant



**Aurelia Jane
McMahon**

Marshfield, Wisconsin

ENTER: OCTOBER 30, 1928
DEATH: SEPTEMBER 8, 1973

MISSION WORK

Nursing,
Clinic Work



**Dorothy
McMannon**

Louisville, Kentucky

ENTER: OCTOBER 30, 1940
DEATH: NOVEMBER 24, 2010

MISSION WORK

Catechetical, Pastoral,
Community Organizer



**Anne Veronica
McNulty**

Lorain, Ohio

ENTER: OCTOBER 6, 1951
DEATH: FEBRUARY 9, 2017

MISSION WORK

Catechetical, Home Visiting,
Parish Work

OUR LADY OF VICTORY MISSIONARY SISTERS



**Caroline
Meister**

Chicago, Illinois

ENTER: JULY 1, 1923
DEATH: SEPTEMBER 11, 1970

MISSION WORK

Catechetical,
Congregation Administration



**Otilia
Mendoza**

Leon, Mexico

ENTER: SEPTEMBER 5, 1930
DEATH: FEBRUARY 21, 2005

MISSION WORK

Catechetical,
Bilingual Adult Education,
Social Work, Pastoral Ministry



**Rafaela
Mendoza**

San Diego de Alejandria Jalisco,
Mexico

ENTER: NOVEMBER 1, 1924
DEATH: SEPTEMBER 13, 2008

MISSION WORK

Catechetical, Social Work,
Home Nursing, Pastoral



**Francene
Merkosky**

Cabel, Saskatchewan, Canada

ENTER: OCTOBER 27, 1945
DEATH: DECEMBER 19, 2013

MISSION WORK

Catechetical, Nursing,
Community Outreach, Hospice



**Frances
Meyer**

Cincinnati, Ohio

ENTER: FEBRUARY 5, 1927
DEATH: MARCH 28, 2001

MISSION WORK

Catechetical,
Group Work, Music



**Marianne
Michels**

Sheboygan, Wisconsin

ENTER: SEPTEMBER 6, 1956
DEATH: JUNE 5, 1999

MISSION WORK

Catechetical, Diocesan CCD,
Adult Education

OUR LADY OF VICTORY MISSIONARY SISTERS



**Susanna
Michels**

Sandstone, Minnesota
ENTER: SEPTEMBER 4, 1925
DEATH: OCTOBER 23, 1996

MISSION WORK

Catechetical, Spanish Instructor,
Work with deaf and blind



**Mary
Middendorf**

Covington, Kentucky
ENTER: OCTOBER 30, 1947
DEATH: JUNE 17, 1997

MISSION WORK

Catechetical,
Liturgical



**Mary David
Miller**

St. Louis, Missouri
ENTER: SEPTEMBER 4, 1931
DEATH: JULY 5, 1992

MISSION WORK

Catechetical,
Social Work



**Mary Josephine
Miller**

Detroit, Michigan
ENTER: FEBRUARY 9, 1935
DEATH: JULY 28, 2013

MISSION WORK

Catechetical, Homemaker,
Supervisor of Volunteers

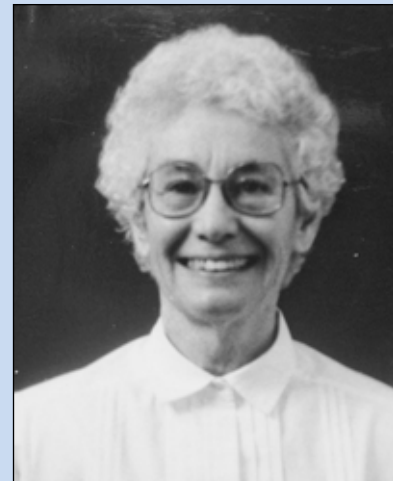


**Rose
Miller**

Flasher, North Dakota
ENTER: SEPTEMBER 15, 1952
DEATH: APRIL 19, 2022

MISSION WORK

Religious Education,
Social Work,
Director of St. Elizabeth Clinic



**Rose M.
Miller**

Stillwater, Minnesota
ENTER: OCTOBER 27, 1948
DEATH: OCTOBER 1, 2006

MISSION WORK

Catechetical, Caregiver,
ESL Teacher

OUR LADY OF VICTORY MISSIONARY SISTERS



**Martha
Molohon**

Curdsville, Kentucky

ENTER: OCTOBER 27, 1942
DEATH: FEBRUARY 23, 2022

MISSION WORK

Religious Education, Ministry
to Mentally Challenged, Liturgy
Planning for Mass in Spanish



**Anna Rita
Montoya**

Santa Fe, New Mexico

ENTER: SEPTEMBER 20, 1932
DEATH: DECEMBER 29, 2001

MISSION WORK

Catechetical, Social Work,
Pastoral



**Carmen
Montoya**

El Paso, Texas

ENTER: FEBRUARY 7, 1932
DEATH: DECEMBER 14, 2011

MISSION WORK

Catechetical, Adult Education,
Music, Liturgical,
Community Administration



**Celine
Montoya**

San Antonio, Texas

ENTER: JANUARY 31, 1931
DEATH: JUNE 10, 1971

MISSION WORK

Catechetical



**Liska
Monzaney**

Harrisburg, Pennsylvania

ENTER: SEPTEMBER 7, 1938
DEATH: JUNE 1, 2003

MISSION WORK

Catechetical,
Pastoral



**María Margarita
Moreno**

Parita, Panama

ENTER: OCTOBER 19, 1998
DEATH: SEPTEMBER 29, 2020

MISSION WORK

Catechetical, Liturgical, Pastoral,
Diocesan Ministry

OUR LADY OF VICTORY MISSIONARY SISTERS



**Regina Marie
Morrissey**

Jackson, Michigan

ENTER: SEPTEMBER 25, 1953

MISSION WORK

Religious Education, RCIA,
Adult Scripture Classes



**Mary Beatrice
Mott**

Cleveland, Ohio

ENTER: OCTOBER 27, 1944
DEATH: APRIL 26, 1990

MISSION WORK

Catechetical



**Evelyn
Mourey**

Monroeville, Indiana

ENTER: OCTOBER 28, 1939
DEATH: MAY 23, 2001

MISSION WORK

Catechetical, Nursing (LPN),
Coordinator of Forever Learning,
Pastoral



**Margaret
Murfield**

Toledo, Ohio

ENTER: OCTOBER 29, 1928
DEATH: APRIL 24, 1930

MISSION WORK

Catechetical



**Mary Alice
Murphy**

Moncton, New Brunswick, Canada

ENTER: OCTOBER 27, 1948

MISSION WORK

Religious Education, Social
Work, Community Organizing,
Congregation Leadership



**Mary Thomas
Murray**

Pittsburgh, Pennsylvania

ENTER: SEPTEMBER 3, 1933
DEATH: MARCH 5, 1964

MISSION WORK

Catechetical

OUR LADY OF VICTORY MISSIONARY SISTERS



**Rita
Musante**

Warren, Pennsylvania
ENTER: SEPTEMBER 5, 1957

MISSION WORK
Religious Education, Retreat and
Spiritual Direction, Advocate for
Mental Health Challenges



**Mary
Navratil**

Exira, Iowa
ENTER: SEPTEMBER 2, 1930
DEATH: OCTOBER 12, 1985

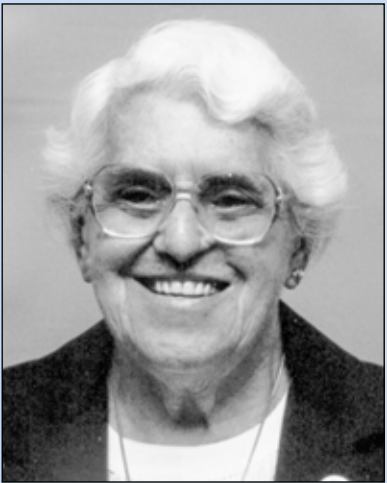
MISSION WORK
Catechetical,
Social Work



**Theresa
Nederhiser**

Cedar Rapids, Iowa
ENTER: SEPTEMBER 5, 1958

MISSION WORK
Medical Technologist,
Religious Education,
Congregation Leadership



**Carolyn Louise
Neff**

Indianapolis, Indiana
ENTER: SEPTEMBER 6, 1950
DEATH: APRIL 23, 2008

MISSION WORK
Catechetical, Bookkeeping, Asst.
Gen. Secretary, Director of Religious
Education, Adult Education



**Mary Jo
Nelson**

Portland, Oregon
ENTER: JANUARY 1, 1975

MISSION WORK
Religious Education, Diocesan
Chancellor, Congregation Leadership,
Consultant for Religious Congregations



**Mary Cecilia
Niehaus**

Cincinnati, Ohio
ENTER: OCTOBER 28, 1942
DEATH: MARCH 21, 2007

MISSION WORK
Housekeeper, Cook,
Maintenance

OUR LADY OF VICTORY MISSIONARY SISTERS



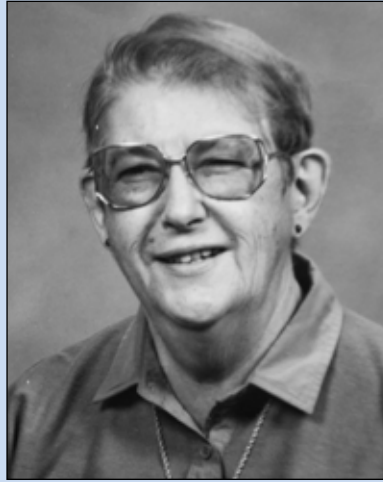
**Lorraine
Noon**

Butte, Montana

ENTER: NOVEMBER 2, 1951
DEATH: DECEMBER 16, 1997

MISSION WORK

Catechetical, Director of
Religious Education, Pastoral,
Administration



**Alice
O'Brien**

Providence, Rhode Island

ENTER: OCTOBER 27, 1944
DEATH: MAY 22, 2000

MISSION WORK

Catechetical, Director of
Religious Education, Migrant
Work, College Instructor, Pastoral



**Lucille
O'Brien**

San Francisco, California

ENTER: SEPTEMBER 20, 1932
DEATH: APRIL 11, 1992

MISSION WORK

Catechetical



**Nora
O'Reilly**

Dublin, Ireland

ENTER: FEBRUARY 10, 1929
DEATH: JANUARY 28, 1989

MISSION WORK

Catechetical



**Patricia Marie
O'Reilly**

Brooklyn, New York

ENTER: AUGUST 28, 1936
DEATH: JUNE 13, 1989

MISSION WORK

Catechetical, Census Work,
Social Work, Public Relations



**Bridie
O'Sullivan**

Reenascreena, County Cork, Ireland

ENTER: FEBRUARY 5, 1931
DEATH: FEBRUARY 26, 1989

MISSION WORK

Catechetical, Pastoral,
Ecumenical,
Victory Noll Coordinator

OUR LADY OF VICTORY MISSIONARY SISTERS



**Theodora
Oehler**

Barnesburg, Oregon

ENTER: OCTOBER 27, 1927
DEATH: FEBRUARY 8, 1979

MISSION WORK

Catechetical, Social Work,
Music, Liturgical



**Catherine
Olberding**

Seneca, Kansas

ENTER: MARCH 1, 1924
DEATH: MARCH 31, 1988

MISSION WORK

Catechetical, Leadership,
Superior General



**Olivia
Olivera**

Los Banos, California

ENTER: FEBRUARY 16, 1934
DEATH: OCTOBER 22, 1962

MISSION WORK

Catechetical



**Francisca
Olvera**

Nueva Laredo Tam, Mexico

ENTER: JUNE 1, 1982

MISSION WORK

Immigration Outreach,
Farmworker Ministry,
Social Services



**Carolyn
Ortega**

Pastura, New Mexico

ENTER: OCTOBER 30, 1947
DEATH: MARCH 18, 2013

MISSION WORK

Catechetical, Victory Noll Junior
College faculty, Pastoral,
Bolivia Mission



**Rosanne
Palmer**

Cleveland, Ohio

ENTER: AUGUST 15, 1983
DEATH: FEBRUARY 20, 2018

MISSION WORK

Clinical Outreach,
Social Work

OUR LADY OF VICTORY MISSIONARY SISTERS



Millicent Peaslee

Gary, Indiana

ENTER: OCTOBER 28, 1939
DEATH: APRIL 17, 2021

MISSION WORK

Catechetical, House of Prayer
Coordinator, Director of
Religious Education, Pastoral



Mary Joseph Penning

Dubuque, Iowa

ENTER: JANUARY 20, 1925
DEATH: DECEMBER 8, 1988

MISSION WORK

Catechetical, Social Work,
Choir, Group Work,
Government Liaison



Merced Perez

Utuaue, Puerto Rico

ENTER: SEPTEMBER 3, 1930
DEATH: NOVEMBER 10, 1986

MISSION WORK

Catechetical



Mary Louise Perl

Mansfield, Ohio

ENTER: OCTOBER 30, 1928
DEATH: DECEMBER 7, 1971

MISSION WORK

Catechetical,
Leadership



Melanie Persche

Alttag Gottschee, Yugoslavia

ENTER: SEPTEMBER 4, 1960
DEATH: JULY 28, 2010

MISSION WORK

Catechetical, Pastoral,
Formation Director in Bolivia,
Congregation Leadership



Ann Therese Plum

Aachen, Germany

ENTER: NOVEMBER 27, 1946
DEATH: DECEMBER 19, 2019

MISSION WORK

Catechetical, Diocesan CCD,
Postulant Director, Pastoral,
Congregation Leadership

OUR LADY OF VICTORY MISSIONARY SISTERS



**Marcella
Poydock**

Brockway, Pennsylvania
ENTER: DECEMBER 27, 1943
DEATH: JANUARY 2, 2001

MISSION WORK

Catechetical, Pastoral,
Director of Religious Education



**Clara
Puls**

Cincinnati, Ohio
ENTER: FEBRUARY 4, 1936
DEATH: SEPTEMBER 5, 1991

MISSION WORK

Catechetical, Home Visiting,
Census Work



**Mary Isabel
Quinn**

Texarkana, Arkansas
ENTER: FEBRUARY 4, 1933
DEATH: JULY 7, 1999

MISSION WORK

Catechetical, Social Work,
Victory Noll Instructor, Pastoral



**John Francis
Radler**

Milwaukee, Wisconsin
ENTER: MARCH 12, 1938
DEATH: FEBRUARY 24, 2018

MISSION WORK

Catechetical, Social Work,
Administration, Caregiver



**Mary Agnes
Rauschenbach**

LaPorte, Indiana
ENTER: SEPTEMBER 4, 1926
DEATH: SEPTEMBER 24, 1982

MISSION WORK

Catechetical,
Social Work



**Lucy
Regalado**

Claremont, California
ENTER: SEPTEMBER 8, 1965

MISSION WORK

Religious Education (US and
Bolivia), Formation Director,
Congregation Leadership

OUR LADY OF VICTORY MISSIONARY SISTERS



**Benedicta
Reinersmann**

Pittsburgh, Pennsylvania

ENTER: FEBRUARY 9, 1929
DEATH: SEPTEMBER 28, 1985

MISSION WORK

Catechetical



**Madeleine Sophie
Renier**

Chicago, Illinois

ENTER: JANUARY 18, 1923
DEATH: MAY 25, 1976

MISSION WORK

Catechetical,
Community Administration,
Social Work, Homemaker



**Cecilia Marie
Renk**

Cleveland, Ohio

ENTER: OCTOBER 28, 1942
DEATH: MARCH 28, 1998

MISSION WORK

Catechetical, Teacher Formation,
Director of Religious Education
for special needs



**Sophia
Renkey**

Pittsburgh, Pennsylvania

ENTER: FEBRUARY 9, 1929
DEATH: MARCH 6, 1992

MISSION WORK

Catechetical, Social Work,
Vocation formation,
General Councilor



**Mary Kathleen
Rice**

St. Louis, Missouri

ENTER: OCTOBER 27, 1944
DEATH: FEBRUARY 23, 2014

MISSION WORK

Catechetical, Pastoral,
Neighborhood Center Director



**Blanche Marie
Richardson**

Indianapolis, Indiana

ENTER: MAY 13, 1923
DEATH: APRIL 5, 1980

MISSION WORK

Catechetical, Formation,
Community Administration,
CCD Supervisor, Migrant Work

OUR LADY OF VICTORY MISSIONARY SISTERS



**Anna Marie
Richter**

Breese, Illinois

ENTER: FEBRUARY 6, 1936
DEATH: SEPTEMBER 28, 2006

MISSION WORK

Catechetical,
VN Farm and kitchen,
Home Visiting



**Mary Lawrence
Rochel**

Sabetha, Kansas

ENTER: AUGUST 3, 1937
DEATH: NOVEMBER 20, 2007

MISSION WORK

Catechetical,
Home/Prison Visiting,
Bookkeeper, Secretarial



**Helen
Rodriguez-Marin**

Needles, California

ENTER: SEPTEMBER 9, 1963

MISSION WORK

Religious Education,
ESL for Adults,
Home-based Language Program



**Fidelis
Roels**

Faribault, Minnesota

ENTER: OCTOBER 28, 1941
DEATH: OCTOBER 7, 2010

MISSION WORK

Catechetical, Social Work,
Nursing, Pastoral,
Youth Work



**Mary Helen
Rogers**

St. Louis, Missouri

ENTER: OCTOBER 28, 1941
DEATH: JANUARY 13, 2014

MISSION WORK

Catechetical, Social Work,
Formation



**Mary Esther
Rosenbeck**

Coldwater, Ohio

ENTER: SEPTEMBER 1, 1933
DEATH: MARCH 14, 2002

MISSION WORK

Catechetical, Home Nursing,
Craft Work, Prayer Ministry

OUR LADY OF VICTORY MISSIONARY SISTERS



**Rose Zita
Rosonke**

Mt. Carmel, Iowa

ENTER: SEPTEMBER 5, 1957

MISSION WORK

Director of Religious Education,
Youth Ministry, Victory Noll
Center Ministry



**Mary Louise
Rowney**

Kokomo, Indiana

ENTER: SEPTEMBER 7, 1952

MISSION WORK

Religious Education,
Catechist Formation,
Congregation Leadership



**Christopher
Rudell**

Baltimore, Maryland

ENTER: SEPTEMBER 6, 1953

MISSION WORK

Religious Education,
Social Service, Nursing



**Florence
Russell**

Denham, Indiana

ENTER: SEPTEMBER 3, 1933

DEATH: FEBRUARY 27, 2002

MISSION WORK

Catechetical, Social Work,
Community Outreach



**Gertrude
Salitrik**

Uniontown, Pennsylvania

ENTER: AUGUST 31, 1938

DEATH: JUNE 26, 2010

MISSION WORK

Catechetical, Home Visiting,
Physical Therapy, Pastoral



**Grace Marie
Samblanet**

Louisville, Ohio

ENTER: SEPTEMBER 6, 1951

DEATH: JANUARY 4, 2015

MISSION WORK

Catechetical, Photography,
Vocation Director,
Administration, Pastoral

OUR LADY OF VICTORY MISSIONARY SISTERS



**Eva María
Sánchez**

Fillmore, California

ENTER: SEPTEMBER 4, 1950
DEATH: SEPTEMBER 22, 1999

MISSION WORK

Catechetical,
Congregation Leadership,
Diocesan Ministry



**Marilyn
Schatz**

Ellicott City, Maryland

ENTER: OCTOBER 30, 1947
DEATH: JUNE 12, 2020

MISSION WORK

Catechetical, Social Work,
Director of Religious Education,
Pastoral, Caregiver



**Marie
Schene**

St. Louis, Missouri

ENTER: JANUARY 31, 1949
DEATH: JULY 21, 2007

MISSION WORK

Catechetical, Home Visiting,
Youth Work, Pastoral



**Charlotte
Scheper**

Oldenburg, Indiana

ENTER: OCTOBER 29, 1927
DEATH: FEBRUARY 6, 1990

MISSION WORK

Catechetical,
Social Work, Nursing,
Community Administration



**Cecilia
Schmitt**

St. Louis, Missouri

ENTER: OCTOBER 25, 1927
DEATH: AUGUST 21, 1965

MISSION WORK

Catechetical, Superior General,
Leadership



**Julia Marie
Schmitt**

Dubuque, Iowa

ENTER: SEPTEMBER 4, 1926
DEATH: AUGUST 1, 1963

MISSION WORK

Catechetical

OUR LADY OF VICTORY MISSIONARY SISTERS



**Juliana
Schmitt**

St. Louis, Missouri

ENTER: JULY 12, 1929
DEATH: JUNE 21, 1986

MISSION WORK

Catechetical,
Clinic Work



**Virginia
Schmitt**

Chaska, Minnesota

ENTER: NOVEMBER 27, 1946
DEATH: MAY 6, 2014

MISSION WORK

Catechetical, Congregation
Leadership, Director of Nursing (RN),
Counseling, Administration, Pastoral



**Melita
Schmitz**

Seneca, Kansas

ENTER: OCTOBER 28, 1943
DEATH: SEPTEMBER 5, 2008

MISSION WORK

Catechetical, Vocation
Coordinator, Chaplain, Pastoral,
Social Work, Foster Care



**Clare Marie
Schnedecker**

Hokah, Minnesota

ENTER: AUGUST 29, 1934
DEATH: SEPTEMBER 14, 2001

MISSION WORK

Catechetical, Caseworker,
Social Work



**Mary Dorothy
Schneider**

Gardenville, New York

ENTER: SEPTEMBER 9, 1925
DEATH: APRIL 19, 1993

MISSION WORK

Catechetical



**Mary Ann
Seewaldt**

North Java, New York

ENTER: AUGUST 10, 1926
DEATH: SEPTEMBER 19, 1973

MISSION WORK

Catechetical,
Home Visiting

OUR LADY OF VICTORY MISSIONARY SISTERS



Marguerite Shields

Omaha, Nebraska
ENTER: SEPTEMBER 18, 1932
DEATH: MARCH 27, 1998

MISSION WORK
Catechetical



Mary Gertrude Siegfried

Milwaukee, Wisconsin
ENTER: FEBRUARY 7, 1930
DEATH: FEBRUARY 4, 1987

MISSION WORK
Catechetical, Group Work,
Religious Instruction of deaf,
Home Visiting, Music



Martha Sijota

Glendenen Beach, Oregon
ENTER: SEPTEMBER 6, 1956
DEATH: JUNE 14, 2020

MISSION WORK
Catechetical,
Secretarial, Caregiver,
High School Coordinator



Gabrielle Skupien

Chicago, Illinois
ENTER: FEBRUARY 4, 1935
DEATH: JUNE 8, 2014

MISSION WORK
Catechetical, Social Work,
Pastoral, Liturgical,
Music, Art



Helena Smith

New Oxford, Pennsylvania
ENTER: OCTOBER 28, 1939
DEATH: AUGUST 26, 2012

MISSION WORK
Catechetical, Pastoral,
Liturgical, CCD Consultant



Rita Snyder

Chicago, Illinois
ENTER: OCTOBER 27, 1945
DEATH: DECEMBER 31, 2011

MISSION WORK
Catechetical, Teacher Formation,
Group Work, Secretarial,
Accountant, Pastoral

OUR LADY OF VICTORY MISSIONARY SISTERS



**Agnes Clare
Sommers**

Topeka, Kansas

ENTER: AUGUST 28, 1936
DEATH: AUGUST 22, 1987

MISSION WORK

Catechetical,
Homemaker



**Gertrude
Spetter**

Albuquerque, New Mexico

ENTER: FEBRUARY 3, 1933
DEATH: AUGUST 20, 2003

MISSION WORK

Catechetical, Group Work,
Music, Teacher Formation,
Liturgical



**Mary Matilda
Spetter**

Clovis, New Mexico

ENTER: FEBRUARY 1, 1936
DEATH: JULY 23, 2005

MISSION WORK

Catechetical,
Music, Pastoral



**Mary Camillus
Spisak**

Boothton, Alabama

ENTER: FEBRUARY 19, 1934
DEATH: AUGUST 8, 1998

MISSION WORK

Catechetical,
Clinic Work



**Helen
Srill**

Chicago, Illinois

ENTER: MARCH 2, 1924
DEATH: NOVEMBER 21, 1966

MISSION WORK

Catechetical,
Leadership



**Marguerite
Srill**

Chicago, Illinois

ENTER: JANUARY 31, 1926
DEATH: MARCH 26, 1987

MISSION WORK

Catechetical

OUR LADY OF VICTORY MISSIONARY SISTERS



**Mary Loretta
Srill**

Chicago, Illinois
ENTER: JULY 13, 1929
DEATH: MAY 24, 1993

MISSION WORK
Catechetical



**Germaine
Stadler**

St. Paul, Minnesota
ENTER: OCTOBER 27, 1945
DEATH: JANUARY 14, 2002

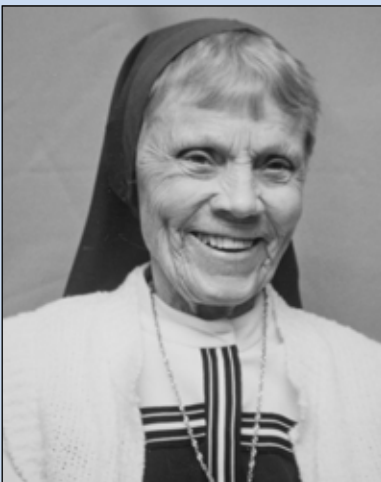
MISSION WORK
Catechetical, General Secretary,
Administration, Registrar



**Therese Marie
Stech**

Chicago, Illinois
ENTER: SEPTEMBER 3, 1930
DEATH: MARCH 15, 1984

MISSION WORK
Catechetical,
Craft Work



**Joachim
Stetar**

Burgettstown, Pennsylvania
ENTER: OCTOBER 28, 1942
DEATH: MAY 25, 2007

MISSION WORK
Catechetical, Teacher Formation,
Social Work, Home Visiting,
Director of Religious Education



**Mary
Stickling**

Ambia, Indiana
ENTER: FEBRUARY 11, 1924
DEATH: JANUARY 7, 1925

MISSION WORK
Catechetical



**Elaine
Sullivan**

Independence, Kansas
ENTER: SEPTEMBER 2, 1931
DEATH: OCTOBER 6, 2009

MISSION WORK
Catechetical, Home Visiting,
Director of Religious Education,
Administration, Pastoral

OUR LADY OF VICTORY MISSIONARY SISTERS



**Gertrude
Sullivan**

Kendall, Wisconsin

ENTER: OCTOBER 27, 1949
DEATH: NOVEMBER 6, 2012

MISSION WORK

Catechetical, President,
Administration



**Mary Genrose
Sullivan**

Joliet, Illinois

ENTER: DECEMBER 27, 1925
DEATH: NOVEMBER 17, 1977

MISSION WORK

Catechetical,
Social Work



**Mary John
Sullivan**

Chicago, Illinois

ENTER: AUGUST 30, 1936
DEATH: SEPTEMBER 23, 2014

MISSION WORK

Catechetical,
Secretarial, Pastoral,
Director of Religious Education



**Charlene
Talbott**

Middlesboro, Kentucky

ENTER: OCTOBER 27, 1948
DEATH: MAY 12, 1982

MISSION WORK

Catechetical, Leadership,
Administration



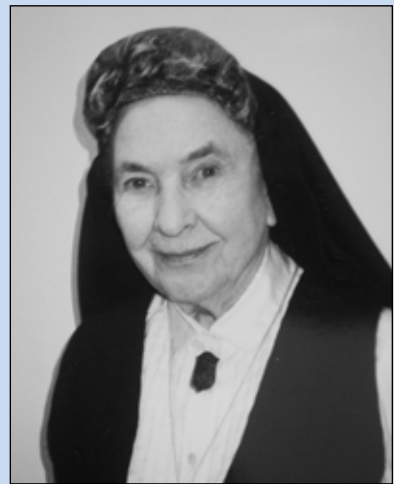
**Janet
Thill**

Manistique, Michigan

ENTER: SEPTEMBER 5, 1955
DEATH: FEBRUARY 28, 2000

MISSION WORK

Catechetical,
Congregation Leadership,
Religious Education, Pastoral



**Regina
Torzewski**

Wausau, Wisconsin

ENTER: OCTOBER 29, 1928
DEATH: DECEMBER 15, 2001

MISSION WORK

Catechetical, Teacher Formation,
Editor of The Missionary Catechist,
Home Visiting, Poet, Consultant

OUR LADY OF VICTORY MISSIONARY SISTERS



**Dorothy Marie
Trapp**

Garrett, Indiana

ENTER: APRIL 23, 1927
DEATH: JANUARY 21, 1995

MISSION WORK

Catechetical,
Office Work



**Dolores
Tringl**

St. Louis, Missouri

ENTER: OCTOBER 27, 1949
DEATH: APRIL 5, 2018

MISSION WORK

Catechetical, Congregation Leadership,
Religious Education of Native Americans,
Administration, Diocesan CCD



**Rose Ann
Trudell**

Enosburg Falls, Vermont

ENTER: SEPTEMBER 6, 1954
DEATH: OCTOBER 5, 2017

MISSION WORK

Catechetical,
Nursing



**Clarita
Trujillo**

El Rito, New Mexico

ENTER: SEPTEMBER 8, 1958

MISSION WORK

Community Outreach,
Campus Ministry,
Congregation Leadership



**Elizabeth
Turnis**

Cascade, Iowa

ENTER: FEBRUARY 3, 1932
DEATH: NOVEMBER 25, 1971

MISSION WORK

Catechetical



**Judith Ann
Turnock**

Mishawaka, Indiana

ENTER: SEPTEMBER 6, 1960

MISSION WORK

Religious Education, Pastoral
Care, Hospice Chaplain,
Congregation Leadership

OUR LADY OF VICTORY MISSIONARY SISTERS



**Monica
Ulibarri**

Bueyeros, New Mexico

ENTER: JULY 14, 1927
DEATH: NOVEMBER 2, 2006

MISSION WORK

Catechetical, Spanish Instructor,
Panama Work,
Formation, Pastoral



**Margaret
Urhausen**

Chicago, Illinois

ENTER: OCTOBER 30, 1940
DEATH: MAY 6, 2016

MISSION WORK

Catechetical,
Director of Religious Education,
Pastoral, Prayer Ministry



**María Luisa
Valdez**

Torreon Coehila, Mexico

ENTER: SEPTEMBER 3, 1973

MISSION WORK

Immigration Outreach,
Director of Evelyn Mourey
Center, Social Services



**Guadalupe
Vazquez**

Jalisco, Mexico

ENTER: DECEMBER 29, 1925
DEATH: JULY 1, 1986

MISSION WORK

Catechetical,
Social Work



**Lucy Marie
Vega**

Mason City, Iowa

ENTER: JANUARY 6, 1955
DEATH: AUGUST 22, 2019

MISSION WORK

Catechetical, Pastoral,
Administration, Archives,
Congregation Leadership



**Carmelita
Vigil**

Walsenburg, Colorado

ENTER: OCTOBER 31, 1925
DEATH: AUGUST 31, 1990

MISSION WORK

Catechetical, Social Work,
Home Nursing

OUR LADY OF VICTORY MISSIONARY SISTERS



**Amelia
Villanueva**

Pueblo, Colorado

ENTER: SEPTEMBER 6, 1950
DEATH: MAY 1, 2003

MISSION WORK

Catechetical, Administration,
Social Work



**Josefa
Vins**

Chicago, Illinois

ENTER: AUGUST 28, 1936
DEATH: FEBRUARY 17, 1990

MISSION WORK

Catechetical



**Mary Bernadette
Wade**

Montgomery, Indiana

ENTER: JULY 12, 1929
DEATH: JUNE 30, 1991

MISSION WORK

Catechetical



**Angeline
Walczyk**

Brush, Colorado

ENTER: SEPTEMBER 6, 1951

MISSION WORK

Certified Nursing Assistant,
Religious Education,
Peace and Justice Advocacy



**Alberta
Walter**

Racine, Wisconsin

ENTER: SEPTEMBER 6, 1950
DEATH: JANUARY 20, 1996

MISSION WORK

Catechetical,
Bolivia Mission



**Pauline
Wapiennik**

Gary, Indiana

ENTER: OCTOBER 28, 1939
DEATH: JUNE 5, 2009

MISSION WORK

Catechetical, Recreational,
School Christian Service

OUR LADY OF VICTORY MISSIONARY SISTERS



**Gabriel
Wathen**

Equality, Illinois

ENTER: JULY 14, 1927
DEATH: OCTOBER 11, 1993

MISSION WORK

Catechetical, Census Work,
Preschool Daycare



**Helen Therese
Weber**

Brooklyn, New York

ENTER: OCTOBER 29, 1927
DEATH: FEBRUARY 17, 1975

MISSION WORK

Catechetical, Home Visiting,
Group Work, Social Work



**Mildred
Weber**

Vandalia, Montana

ENTER: OCTOBER 27, 1939
DEATH: NOVEMBER 22, 2008

MISSION WORK

Catechetical, Administration,
Pastoral, Store Manager,
Teacher Supervision



**Paula
Wellnitz**

Elgin, Illinois

ENTER: OCTOBER 27, 1948
DEATH: MARCH 28, 2020

MISSION WORK

Catechetical, Social Work,
Mental Health Counseling,
Pastoral, Family Work, Secretarial



**Marie
Welter**

Chicago, Illinois

ENTER: OCTOBER 27, 1944
DEATH: JULY 31, 2011

MISSION WORK

Catechetical, Social Work,
Administration, Caregiver,
Pastoral, Census Work



**Mary Elizabeth
Wengritzky**

Lombard, Illinois

ENTER: OCTOBER 30, 1928
DEATH: SEPTEMBER 1, 1960

MISSION WORK

Catechetical

OUR LADY OF VICTORY MISSIONARY SISTERS



**Marian Frances
Weyenberg**

Little Chute, Wisconsin

ENTER: JULY 12, 1929
DEATH: AUGUST 20, 1991

MISSION WORK

Catechetical, Social Work,
Home Visiting



**Genevieve
Whitehead**

Anderson, Indiana

ENTER: MAY 17, 1925
DEATH: OCTOBER 18, 1996

MISSION WORK

Catechetical,
Home Visiting



**Mary
Whitfield**

Stone City, Iowa

ENTER: MAY 18, 1926
DEATH: FEBRUARY 20, 1986

MISSION WORK

Catechetical, Social Work,
Home Visiting, Leadership



**Esther
Wieber**

Fowler, Michigan

ENTER: SEPTEMBER 6, 1951
DEATH: DECEMBER 21, 1994

MISSION WORK

Catechetical,
Home Visiting



**Louise
Wilbers**

Jefferson City, Missouri

ENTER: SEPTEMBER 19, 1932
DEATH: JANUARY 13, 1984

MISSION WORK

Catechetical,
Pastoral



**Marie
Wilbers**

Jefferson City, Missouri

ENTER: JANUARY 25, 1939
DEATH: AUGUST 26, 1992

MISSION WORK

Catechetical,
Social Work

OUR LADY OF VICTORY MISSIONARY SISTERS



**Dora
Wilke**

Rotterdam, Netherlands

ENTER: APRIL 24, 1927
DEATH: DECEMBER 14, 1961

MISSION WORK

Catechetical



**Henrietta
Wilke**

St. Rose, Illinois

ENTER: OCTOBER 27, 1944
DEATH: AUGUST 25, 2007

MISSION WORK

Catechetical, Administration,
Director of Religious Education,
Pastoral, Family Work



**Martha
Wilke**

St. Rose, Illinois

ENTER: OCTOBER 28, 1939
DEATH: FEBRUARY 11, 2014

MISSION WORK

Catechetical, Diocesan CCD,
Teacher, Consultant



**Priscilla
Wilke**

St. Rose, Illinois

ENTER: OCTOBER 30, 1947
DEATH: NOVEMBER 21, 2011

MISSION WORK

Catechetical, Pastoral,
Director of Religious Education



**Mary Rita
Windolph**

Albion, Nebraska

ENTER: AUGUST 28, 1934
DEATH: MARCH 3, 1997

MISSION WORK

Catechetical, Home Visiting,
Adult Literacy



**Christine
Wirtz**

Crown Point, Indiana

ENTER: FEBRUARY 9, 1928
DEATH: APRIL 14, 1989

MISSION WORK

Catechetical

OUR LADY OF VICTORY MISSIONARY SISTERS



**Barbara Marie
Witt**

Belleville, Illinois

ENTER: OCTOBER 27, 1945
DEATH: AUGUST 4, 2010

MISSION WORK

Homemaker, Baker,
Administration, Laundry



**Marlene
Wolf**

Wadena, Minnesota

ENTER: SEPTEMBER 6, 1950
DEATH: FEBRUARY 15, 2012

MISSION WORK

Catechetical, Headstart,
Director of Religious Education



**Viola
Wopperer**

Cincinnati, Ohio

ENTER: OCTOBER 29, 1928
DEATH: MAY 16, 1977

MISSION WORK

Catechetical, Social Work,
Archives



**Martha
Wordeman**

Bellevue, Kentucky

ENTER: OCTOBER 27, 1944
DEATH: SEPTEMBER 4, 2013

MISSION WORK

Catechetical, Diocesan CCD,
Administration, Pastoral, RCIA,
Peace and Justice Educator



**Dorothy Louise
Wortmann**

Racine, Wisconsin

ENTER: SEPTEMBER 9, 1950
DEATH: SEPTEMBER 6, 2012

MISSION WORK

Catechetical,
Finance, Pastoral



OLVM LEADERSHIP 1922-2022



OLVM LEADERSHIP 1922-2022

SPIRITUAL DIRECTOR 1922-1938



Rev. John J.
Sigstein
1922-1938

HEAD CATECHIST 1922-1938



Julia Doyle
1922-1924



Sophie
Renier
1924-1927



Catherine
Olberding
1927-1929



Mary
McConville
1929-1935



Clara
Leuttenegger
1936-1938

SUPERIOR GENERAL 1938-1968



Catherine
Olberding
1938-1950



Cecilia
Schmitt
1950-1962



Florentine
Lohr
1962-1968

PRESIDENT 1968-2022



Florentine
Lohr
1968-1971



Gertrude
Sullivan
1971-1977



Jeanette Halbach
1977-1984
2000-2008



Mary Lou
Rowney
1984-1992



Lucy
Regalado
1992-2000



Beatrice
Haines
2008-2016



Mary Jo
Nelson
2016-2022

OLVM LEADERSHIP

1922-2022



1922-1924

Rev. John J. Sigstein
Catechist Julia Doyle
Catechist Marie Benes

Board of Governors

Spiritual Director
Head Catechist and Treasurer
Secretary



1924-1925

Rev. John J. Sigstein
Catechist Sophie Renier
Catechist Caroline Meister

Board of Governors

Spiritual Director
Head Catechist
Secretary and Treasurer



1925-1927

Rev. John J. Sigstein
Catechist Sophie Renier
Catechist Caroline Meister
Catechist Marie Benes
Catechist Julia Doyle
Catechist Marie Boden
Catechist Blanche Richardson

Board of Governors

Spiritual Director
Head Catechist
Secretary and Treasurer



1927-1928

Rev. John J. Sigstein
Catechist Catherine Olberding
Catechist Julia Doyle
Catechist Blanche Richardson
Catechist Sophie Renier
Catechist Caroline Meister
Catechist Helen Srill

Board of Governors

Spiritual Director
Head Catechist

OLVM LEADERSHIP

1922-2022



1928-1929

Rev. John J. Sigstein
Catechist Catherine Olberding
Catechist Helen Srill
Catechist Sophie Renier
Catechist Caroline Meister
Catechist Josephine Penning

Board of Governors

Spiritual Director
Head Catechist



1929-1933

Rev. John J. Sigstein
Catechist Mary McConville

Board of Governors

Spiritual Director
Head Catechist



1933-1935

Rev. John J. Sigstein
Catechist Mary McConville
Catechist Julia Doyle
Catechist Josephine Penning
Catechist Helen Srill

Board of Governors

Spiritual Director
Head Catechist

1935

Catechist Mary McConville resigned as Head Catechist



1936-1937

Rev. John J. Sigstein
Catechist Clara Leutenegger
Catechist Mary Dickebohm
Catechist Caroline Meister
Catechist Catherine Olberding
Catechist Mary McConville
Catechist Cecilia Schmitt

Board of Governors

Spiritual Director
Head Catechist
Secretary Treasurer

OLVM LEADERSHIP 1922-2022



1937-1938

Rev. John J. Sigstein
Catechist Clara Leutenegger
Catechist Caroline Meister
Catechist Catherine Olberding
Catechist Mary McConville
Catechist Cecilia Schmitt

Board of Governors

Spiritual Director
Head Catechist



1938-1941

Catechist Catherine Olberding
Catechist Clara Leutenegger
Catechist Helen Srill
Catechist Caroline Meister
Catechist Josephine Penning

First Canonical Election Superior General and Council

Superior General
First Councilor



1941-1947

Catechist Catherine Olberding
Catechist Helen Srill
Catechist Caroline Meister
Catechist Clara Leutenegger
Catechist Josephine Penning

Superior General and Council

Superior General
First Councilor



1947-1950

Mother Catherine Olberding
Sister Cecilia Schmitt
Sister Mary Whitfield
Sister Charlotte Scheper
Sister Benigna Furst

Superior General and Council

Superior General
Vicar

OLVM LEADERSHIP 1922-2022



1950-1956

Mother Cecilia Schmitt
Sister Mary Angela Dickebohm
Sister Mary Louise Perl
Sister Elaine Sullivan
Sister Cordelia Marie Bahl

Superior General and Council

Superior General
Vicar



1956-1962

Mother Cecilia Schmitt
Sister Mary Whitfield
Sister Mary Angela Dickebohm
Sister Helen Srill
Sister Sophia Renkey

Superior General and Council

Superior General
Vicar



1962-1968

Mother Florentine Lohr
Sister Justine Kiefer
Sister Mary Gemma (Virginia) Schmitt
Sister Elizabeth Ann Clifford
Sister Margaret Ann Harrison

Superior General and Council

Superior General
Vicar
General Secretary



1968-1971

Sister Florentine Lohr
Sister Gertrude Sullivan
Sister Justine Kiefer
Sister Dolores Balch
Sister Charlene Talbott
Sister Joseph Adele (Jeanette)
Halbach

President, Vice President, Area Coordinators

President
Vice President/VN Coordinator
California Area
Southwest Area
East/Midwest Area
Mountain Area

OLVM LEADERSHIP 1922-2022



1971-1974

Sister Gertrude Sullivan
Sister Jeanette Halbach
Sister Lucy Marie Vega
Sister Mary Doran
Sister Theresa Nederhiser
Sister Geraldine Kirkessner

President, Vice President, Area Coordinators

President
Vice President/VN Coordinator
Southwest Area
East/Midwest Area
California Area
Mountain Area

- Sister Geraldine Kirkessner resigned in 1972
- Sister Ann Therese Plum was elected in 1973



1974-1977

Sister Gertrude Sullivan
Sister Ann Therese Plum
Sister Palmira Perea
Sister Mary Louise Rowney
Sister Helen Flaspohler
Sister Charlene Talbott

President, Vice President, Area Coordinators

President
Vice President/VN Coordinator
East/Midwest Area
Mountain Area
Southwest Area
California Area



1977-1980

Sister Jeanette Halbach
Sister Ann Therese Plum
Sister Charlene Talbott
Sister Beatrice Haines
Sister Mary Louise Rowney
Sister Palmira Perea

President, Vice President, Area Coordinators

President
Vice President/VN Coordinator
California Area
Southwest Area
Mountain Area
East/Midwest Area

OLVM LEADERSHIP 1922-2022



1980-1984

Sister Jeanette Halbach
Sister Virginia Schmitt
Sister (Mary) Dolores Tringl
Sister Alma Bill
Sister Lucille Martinez
Sister Beatrice Haines

**President, Vice President,
Area Coordinators**
President
Vice President/NV Coordinator
Mountain Area
East/Midwest Area
California Area
Southwest Area



1984-1988

Sister Mary Louise Rowney
Sister Joan Arnold
Sister Angela Marzen
Sister Lucille Martinez

Leadership Team
President
Vice President



1988-1992

Sister Mary Louise Rowney
Sister Joan Arnold
Sister Angela Marzen
Sister Mary Alice Murphy

Leadership Team
President
Vice President



1992-1996

Sister Lucy Regalado
Sister Beatrice Haines
Sister Eva Maria Sanchez
Sister Janet Thill

Leadership Team
President
Vice President

OLVM LEADERSHIP 1922-2022



1996-2000

Sister Lucy Regalado
Sister Beatrice Haines
Sister Mary Ellen Descourouez
Sister Janet Thill

Leadership Team

President
Vice President



2000-2004

Sister Jeanette Halbach
Sister Melanie Persche
Sister Mary Jo Nelson
Sister Rose Frances Gilmore

Leadership Team

President
Vice President



2004-2008

Sister Jeanette Halbach
Sister Melanie Persche

Sister Mary Jo Nelson
Sister Lucille Martinez

Leadership Team

President
Vice President/
General Secretary
General Treasurer

OLVM LEADERSHIP 1922-2022



2008-2012

Sister Beatrice Haines
Sister Lucille Martinez
Sister Elizabeth Anderson
Sister Clarita Trujillo

Leadership Team

President
Vice President
General Secretary
General Treasurer



2012-2016

Sister Beatrice Haines
Sister Judith Turnock
Sister Ginger Downey
Sister Leora Linnenkugel

Leadership Team

President
Vice President
General Secretary
General Treasurer



2016-2022

Sister Mary Jo Nelson
Sister Lucille Martinez
Sister Ginger Downey

Leadership Team

President
Vice President
General Secretary

NOTE: Leadership Team term extended two years in 2020



**HOLY SPIRIT
NEIGHBORHOOD
FAMILY SERVICES**
Counseling Families and Individuals
MONDAY thru FRIDAY ALL WELCOME
Sister Mary Helen, Social Worker
Tel: 892-6909





DIOCESAN ASSIGNMENTS



PRESENCE AND SERVICE

Organized in Chicago by Father John Joseph Sigstein as the Society of Missionary Catechists, the first two members of the Congregation were sent to New Mexico in 1922. The Motherhouse was built in Huntington, Indiana, in 1925. The name eventually changed to Our Lady of Victory Missionary Sisters. From that central location, Victory Noll Sisters received their training, and were missioned across the United States and as far away as Bolivia. Over their 100-year existence, OLVN Sisters have served in more than 100 different dioceses in 36 states. They served in many locales, from large cities to remote crossroads. The following pages detail the main locations where Sisters were missioned, but in reality, they had a presence in many more named and unnamed places.

ALABAMA



ARCHDIOCESE OF
Mobile

Grove Hill

ARIZONA



DIOCESE OF
Gallup

Springerville



DIOCESE OF
Phoenix

Coolidge
Flagstaff
Glendale
Phoenix
Wickenburg



DIOCESE OF
Tucson

Apache Junction
Clifton
Cortaro
Florence
Littletown
Morenci
Nogales
Safford
Solomon
Superior
Tucson
Yuma

CALIFORNIA



DIOCESE OF
Fresno

Bakersfield
Delano
Dos Palos
Los Banos
Tulare



ARCHDIOCESE OF
Los Angeles

Azusa
Burbank
Carson
Commerce
Canogo Park
Glendale
Inglewood
Lomita
Los Angeles
Malibu
Norwalk
Pacoima
San Fernando
San Pedro
Santa Monica
Santa Paula
Santa Ynez
Solvang



DIOCESE OF
Monterey

Monterey Park
San Luis Obispo
Seaside
Carmel



DIOCESE OF
Oakland

Berkley
Oakland
San Leandro



DIOCESE OF
Sacramento

Sacramento
Willows



DIOCESE OF
San Bernardino

Barstow
Bermuda Dunes
Coachella
Colton
Highland
LaQuinta
Redlands
Rialto
San Bernardino
Winchester
Yucaipa

CALIFORNIA



DIOCESE OF **San Diego**

Alpine
Big Bear Lake
Brawley
Blythe
Calexico
Carlsbad
Chula Vista
Corona
El Cajon
El Centro
Hemet
Holtville
Imperial
Imperial Beach
Indio
Montclair
Ontario
Riverside
San Diego



ARCHDIOCESE OF **San Francisco**

Montara
San Francisco
San Rafael

COLORADO



ARCHDIOCESE OF **Denver**

Arvada
Boulder
Brighton
Broomfield
Colorado Springs
Denver
Fort Collins
Fort Lupton
Golden
Greeley
Hot Sulphur Springs
LaJunta
LaSalle
Lindon
Platteville



DIOCESE OF **Pueblo**

Durango
Montrose
Pueblo
Rocky Ford

FLORIDA



ARCHDIOCESE OF **Miami**

Cape Coral
Clewiston
Coral Springs
Miami
North Miami
Opa Locka



DIOCESE OF **Orlando**

Haines City
Marion Oaks
Orlando
Sebring



DIOCESE OF **Palm Beach**

Belle Grande
Indiantown



DIOCESE OF **St. Petersburg**

Fort Meyers
Punta Gorda
St. Petersburg
Tampa



DIOCESE OF **Venice**

Fort Meyers
Lehigh Acres

DISTRICT OF COLUMBIA



ARCHDIOCESE OF **Washington, DC**

Washington, D.C.

ILLINOIS



DIOCESE OF
Belleville

Dubois



ARCHDIOCESE OF
Chicago

Chicago
North Riverside
Stickney



DIOCESE OF
Joliet

Crest Hill
Joliet



DIOCESE OF
Peoria

Tolono



DIOCESE OF
Rockford

DeKalb



DIOCESE OF
Springfield

Alton

INDIANA



DIOCESE OF
**Fort Wayne-
South Bend**

Decatur
East Chicago
East Gary
Elkhart
Fort Wayne
Gary
Goshen
Huntington
Indiana Harbor
Kendallville
Ligonier
Milford
San Pierre
South Bend



DIOCESE OF
Gary

Beverly Shores
Crown Point
East Chicago
Gary
Hammond
Michigan City
San Pierre



ARCHDIOCESE OF
Indianapolis

Bloomington
Greensburg
Indianapolis



DIOCESE OF
Lafayette

Hartford City
Kokomo
Lafayette
Rensselaer
West Lafayette
Wheatfield

IOWA



DIOCESE OF
Davenport

Harper
Keota



ARCHDIOCESE OF
Dubuque

Cedar Rapids
Delhi
Dubuque
Osage



DIOCESE OF
Sioux City

Primghar

KANSAS



ARCHDIOCESE OF
Kansas City

Frankfort
Herington
Kansas City
Osawatomie
Prairie Village
Seneca



DIOCESE OF
Salina

Concordia
Hiawatha
Manhattan
Topeka



DIOCESE OF
Wichita

Wichita

MARYLAND



ARCHDIOCESE OF
Baltimore

Baltimore
Ellicott City

KENTUCKY



DIOCESE OF
Covington

Beattyville
Covington
Martin
Monticello
Richmond



ARCHDIOCESE OF
Louisville

Columbia
Louisville
Masonic Home



DIOCESE OF
Owensboro

Owensboro



DIOCESE OF
Lexington

Louisa

MASSACHUSETTS



DIOCESE OF
Fall River

Fall River
New Bedford
North Dighton
North Easton
South Yarmouth
West Harwich
Westport

MICHIGAN



ARCHDIOCESE OF
Detroit

Chesaning
Detroit
Dundee
Garden
Ida
Imlay City
Lexington
Mount Clemens
Port Huron
Richmond



DIOCESE OF
Grand Rapids

Allendale
Grand Rapids
Lakeview
Muskegon
Muskegon Heights
Reed City



DIOCESE OF
Lansing

Adrian
Lansing



DIOCESE OF
Marquette

Escanaba
Gwinn
Sault Saint Marie
Sutton Bay



DIOCESE OF
Kalamazoo

Albion
Coldwater
Dowagiac



DIOCESE OF
Saginaw

Port Sanilac
Saginaw



DIOCESE OF
Gaylord

Elk Rapids
Grayling
Oscoda
Traverse City

MINNESOTA



DIOCESE OF
Saint Cloud

Collegetown



ARCHDIOCESE OF
**Saint Paul-
Minneapolis**

Minneapolis
Saint Paul
Stillwater



DIOCESE OF
Winona

Winona

MISSOURI



DIOCESE OF
Jefferson City

Jefferson City
Sedalia



ARCHDIOCESE OF
Saint Louis

Elsberry
Florissant
Saint Louis
Flat River



DIOCESE OF
**Springfield-
Cape Girardeau**

Cape Girardeau
Kennett
Lebanon
Malden
Monett
Neosho
Springfield



DIOCESE OF
**Kansas City-
Saint Joseph**

Gallatin
Hamilton
Kansas City
Saint Joseph

MONTANA



DIOCESE OF
Helena

Hamilton

NEVADA



DIOCESE OF
Reno

Elko
Ely
Hawthorne
Las Vegas
Reno
Winnemucca



DIOCESE OF
Trenton

Flemington
Highstown
Middlesex
South Bound Brook
Trenton

NEBRASKA



ARCHDIOCESE OF
Omaha

Norfolk

NEW MEXICO



DIOCESE OF
Las Cruces

Carlsbad



ARCHDIOCESE OF
Santa Fe

Abiquiu
Albuquerque
Anton Chico
Carmen
Cerillos
Chaperito
Chimayo
Española
Grants
Hagerman
Holbrook
Holman
Las Vegas
Los Lomas
Mora
Ocate
Penasco
Questa
Santa Fe
Santa Rosa
Springer
Tohatchi
Tucumcari
Vaughn
Victory Mount
Villanueva
Watrous

NEW YORK



DIOCESE OF
Buffalo

Salamanca



ARCHDIOCESE OF
New York

Bronx
New York City

OHIO



ARCHDIOCESE OF
Cincinnati

Bellefontaine
Cincinnati
Coldwater
Oxford



DIOCESE OF
Columbus

Dennison
Newark
Washington Court
House



DIOCESE OF
Cleveland

Bay Village
Cleveland
Lorraine
Northfield
Wooster



DIOCESE OF
Toledo

Holgate
Lima
Milan
Paulding
Toledo
Van Wert
Wauseon

OKLAHOMA



ARCHDIOCESE OF
Oklahoma City

Guymon
Durant



DIOCESE OF
Tulsa

Ponca City

OREGON



ARCHDIOCESE OF
Portland

Grants Pass
Portland
Woodburn

PENNSYLVANIA



DIOCESE OF
Erie

Erie
Smethport
Union City
Warren



ARCHDIOCESE OF
Philadelphia

Horsham



DIOCESE OF
Charleston

West Columbia



DIOCESE OF
Harrisburg

Columbia



DIOCESE OF
Pittsburgh

Baden
Clairton

SOUTH DAKOTA



DIOCESE OF
Rapid City

Eagle Butte



DIOCESE OF
Sioux Falls

Aberdeen

TENNESSEE



DIOCESE OF
Nashville

Lewisburg
Nashville

TEXAS



DIOCESE OF **Amarillo**

Amarillo
Big Spring
Brady
Lubbock



DIOCESE OF **Austin**

Luling
Mason



DIOCESE OF **Brownsville**

Brownsville
Edinburg
Harlingen
Killeen
La Grulla
McAllen
Mission
Pharr
Rockport
San Benito
Santa Rosa
Weslaco



DIOCESE OF **Corpus Christi**

Corpus Christi
Mathis
McAllen



DIOCESE OF **El Paso**

El Paso
Fabens
Pecos
Saint Hedwig
Smelter



DIOCESE OF **Fort Worth**

Denton



ARCHDIOCESE OF **Galveston- Houston**

Houston



DIOCESE OF **Lubbock**

Abernathy
Lubbock
Plainview



DIOCESE OF **San Angelo**

Brady
Fort Stockton
Midland
Odessa
Rio Grande City
San Angelo
Sweetwater



ARCHDIOCESE OF **San Antonio**

Abilene
Del Rio
Eagle Pass
Gonzales
Karnes City
New Braunfels
Yorktown



DIOCESE OF **Tyler**

Mount Pleasant



DIOCESE OF **Victoria**

Yorktown

UTAH



DIOCESE OF **Salt Lake City**

Bingham
Bingham Canyon
Brigham City
East Carbon City
Eureka
Moab
Ogden
Orangeville
Payson
Provo
Salt Lake City
Tooele
West Valley City

VERMONT



DIOCESE OF
Burlington

Burlington
Springfield

WEST VIRGINIA



DIOCESE OF
**Wheeling-
Charleston**

laeger
War

BOLIVIA



ARCHDIOCESE OF
Cochabamba

Cochabamba



DIOCESE OF
Oruro

Oruro

VIRGINIA



DIOCESE OF
Richmond

Alexandria
Clinton Forge

WISCONSIN



DIOCESE OF
Green Bay

Appleton



ARCHDIOCESE OF
Milwaukee

Milwaukee
Sheboygan
Wilmot



ARCHDIOCESE OF
Santa Cruz

Buena Vista
Mora

WASHINGTON



ARCHDIOCESE OF
Seattle

Everett
Granite Falls
Seattle

WYOMING



DIOCESE OF
Cheyenne

Cheyenne
Green River
Lander
Powell
Riverton
Sundance
Upton
Wheatland

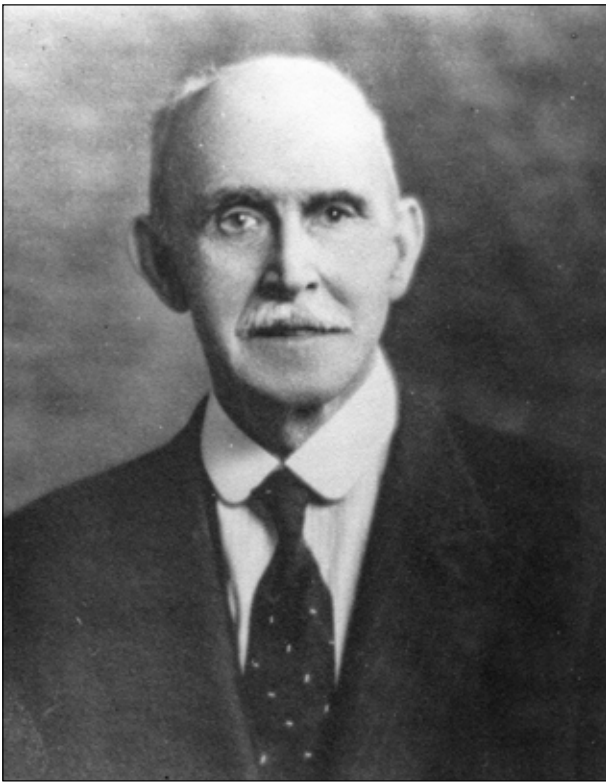




BENEFACTORS

In the critical early years of the Community’s existence, Founder Father John Joseph Sigstein was fortunate to have foundational benefactors in influential publisher Monsignor John Francis Noll, and the philanthropic couple Peter and Julia O’Donnell, who were looking to invest their abundance in religious education to underserved populations. That collaboration resulted in the building of the Victory Noll Motherhouse in Huntington, Indiana, in 1925. That story is told in the following pages. Since that initial investment into the vision of Father Sigstein, Our Lady of Victory Missionary Sisters have benefitted from the support of countless individuals and organizations who have given their time, talent and treasure to help advance the mission of the Congregation and allowed OLVN Sisters to reach out to those in need. There have been those who have contributed financially or with other resources, and those who have volunteered in various efforts. The Sisters have been buoyed by the loyalty of lay staff, and from numerous religious communities in which they were missioned. Most importantly, the Victory Noll Sisters have been lifted by the constant prayers from those with whom they have shared so much over the past century.

OUR LADY OF VICTORY MISSIONARY SISTERS



PETER AND JULIA O'DONNELL

By Sister Lucille Martinez, OLVM
From information in the Victory Noll Archives

“Stories have the power to ignite our fire, educate, simplify, motivate and launch movements.” Every religious community has its story of how the initial fire to launch a new way of carrying out the Good News was first begun. The story of Our Lady of Victory Missionary Sisters can be succinctly summarized by saying it was the vision, the collaboration and partnership of three men from very distinct geographical locations who were willing to explore the potential of collaboration, the wealth of resources and to listen intensely and reverently to the voices within and beyond.

In 1923 Monsignor John Noll, editor of Our Sunday Visitor, and well-known nationally for his many publications distributed across the United States, had a consequential encounter with Peter O'Donnell in Hot Springs, Arkansas, that eventually forged a partnership to assist the fledging society of a group of women religious being established by a young diocesan priest in Chicago, Father John Joseph Sigstein.

Peter O'Donnell was a former Chicago police sergeant and upon his retirement he and his wife, Julia, moved to Long Beach, California, because of Julia's health and the hope the warmer weather would be more agreeable to her. Shortly after arriving in Long Beach, Mr. O'Donnell made an investment in land only to discover shortly after that the lots were often under water. Fearing that they had lost their money, they prayed to our Blessed Mother and promised that if the investment would be successful, they would give half the sum to a worthy charity. Within a short time the city of Long Beach bought the property for \$32,000. The investments yielded profits and the O'Donnells were anxious to keep their promise to the Mother of God.



ARCHBISHOP JOHN FRANCIS NOLL

At that providential meeting in Hot Springs, Arkansas, Peter shared with Monsignor Noll his desire to have religious instruction provided to the many Mexican children attending public schools in California. Monsignor Noll informed Mr. O'Donnell that he was aware of a priest in Chicago who had just organized a community of young women whose purpose was to do the very kind of apostolate that he had in mind. If new members were to be received into this new community they would need a motherhouse and novitiate. Energized by the conversation with Monsignor Noll, Mr. O'Donnell sold some other ocean front property and turned the amount over to Our Sunday Visitor for a motherhouse and novitiate for the Society of Missionary Catechists.

After the conversation with Mr. O'Donnell, Monsignor Noll met with Father Sigstein to inform him about his encounter with the O'Donnell's in Hot Springs and their desire to give financial help to the Catechists. After considerable prayer to our Blessed Mary and reflection, Father Sigstein accepted the magnanimous offer of Monsignor Noll and Our Sunday Visitor with a substantial gift from the O'Donnells to build the motherhouse in Huntington, Indiana. In 1941 in the "History of the Diocese of Fort Wayne," Bishop Noll writes: "Monsignor Noll built Victory Noll in 1923 at an outlay of \$250,000. A California gentleman contributed \$100,000 to this project."

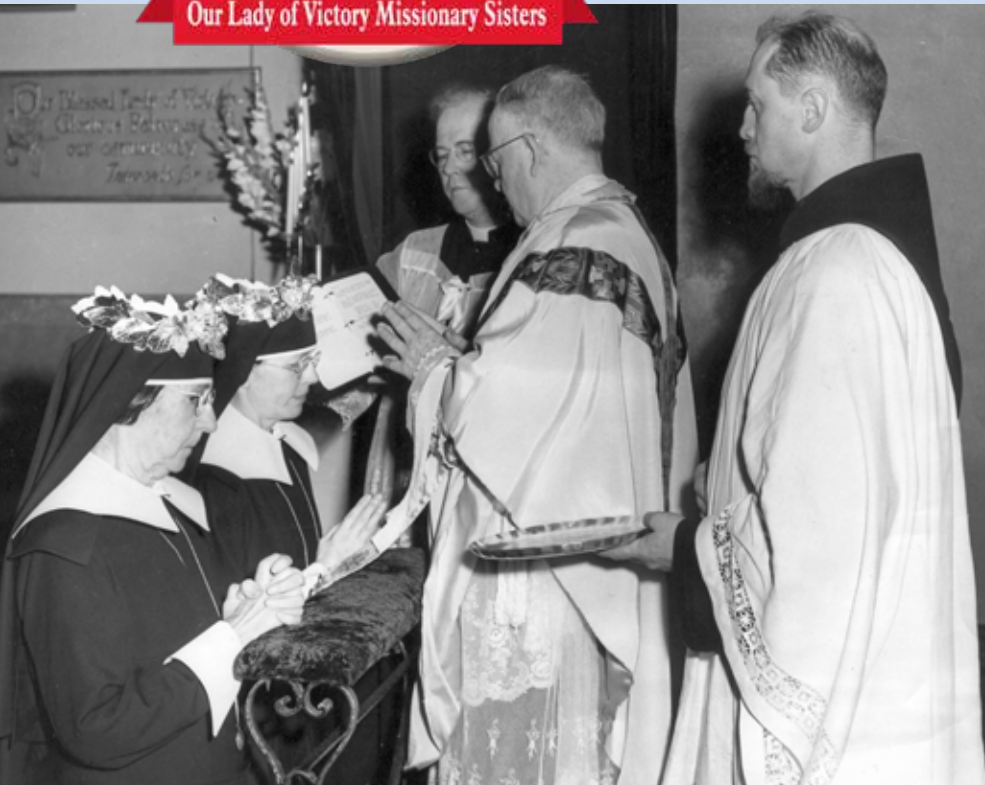
Father Sigstein and Peter O'Donnell, when they had the first opportunity to meet, both were attracted to each other. Their common bonds were their deep love for our Blessed Mother and their zeal for the Church. Whenever Father Sigstein told the story of the O'Donnell's connection to Victory Noll, Father would describe him as being, "a hardheaded business man," a one-time police sergeant.

This is the story of how the Victory Noll Motherhouse came about. It is the story of three men with a shared dream, faith in our Blessed Mother and zeal for sharing the Catholic faith that forged a partnership with these unlikely men.





TRIBUTES



OUR LADY OF VICTORY MISSIONARY SISTERS



“The Sisters have changed my life and the lives of my family through their work at Julia Center in Chicago. Their work must go on, and most of all at Julia Center, a welcoming place for all, must open its doors again after Covid. We thank God for the opportunity to know and to work with the women of Victory Noll. It has been a blessing for our whole family.”

— Corrie Keefe, Des Plaines, Ill.

“I have the fondest memories of the Sisters guiding me in the catechism from the time I was six or seven through high school. My immense gratitude to OLVM for being there with me.”

— Marvin Archuleta, Albuquerque, N.M.



“On my arrival in Covington, I was informed of the presence of Victory Noll in the Diocese. This information delighted me and strengthened me. The Sisters’ involvement beyond human estimation places the Diocese of Covington in the debt of this religious family who came to its aid from the Hoosier country.”

— Bishop Ackerman,
Covington, Kentucky, in 1975



OUR LADY OF VICTORY MISSIONARY SISTERS



“The Sisters were role models and mentors for the citizens they served. It has been 31 years since the departure of the Sisters here, but their impact on our communities still flourishes in how they spread God’s unconditional love and acceptance. Their departure left a significant void in our hearts, but their blessing remains with us in the joyfulness and love of God and serving others and spreading the Good News that was contagious. The Victory Noll Sisters are an example that Faith, Hope and Love shines in our World. Thank you for gracing our lives with your presence, love and service.”

— Lorette Sandoval, Las Vegas, N.M.

“The Sisters are the salt of the earth and heart of the Church. They are the torchbearers of the Gospel in our Church. They are the ones in the trenches, in the jails, in the hospitals, on the street, caring for God’s holy ones. They are the true examples of what it means to be disciples of Jesus.”

— Jim Didier



“With their many years of service and the witness to their faith, the Victory Noll Sisters in Bolivia made God present in the lives of the poor. They were with the people in their many struggles for social justice and they were a blessing to Bolivia.”

— Father Thomas Domurat,
East Boston, Mass.

OUR LADY OF VICTORY MISSIONARY SISTERS

“OLVM Sisters inspire me with their kindness and example of standing up for the poor and less fortunate.”

— Eileen Shelton, Willoughby, Ohio



“The impact of the Sisters on my life has been immense, consistent and helped me to develop into the person I am becoming.”

— Steve Sullivan, Fort Wayne, Ind.

“I would like to say thank you to all the Victory Noll Sisters for the gift of their presence and their work for many year in the Archdiocese of Denver. Victory Noll Sisters helped many families in the Holy Ghost Parish in Denver at their Holy Spirit Center for many years. Many homeless people in Fort Collins and many families were provided affordable housing.”

— Fr. George Fagan, Colorado Springs, Colo.



“I have witnessed the work of the Sisters in two dioceses. I was a seminarian and priest in San Diego, noting the catechetical work in parishes and the services of Camp Oliver.”

— Phillip Straling, Bishop Emeritus, Reno, Nev.

OUR LADY OF VICTORY MISSIONARY SISTERS



“I have always been of the Catholic faith, but never quite understood until I met these special Sisters. I spent a great deal of time with the Sisters, whether at Mass or in their home. Their mission in life touched me deeply. They will remain in my memory forever, and also their wisdom. Their knowledge and teachings will remain in my heart forever.”

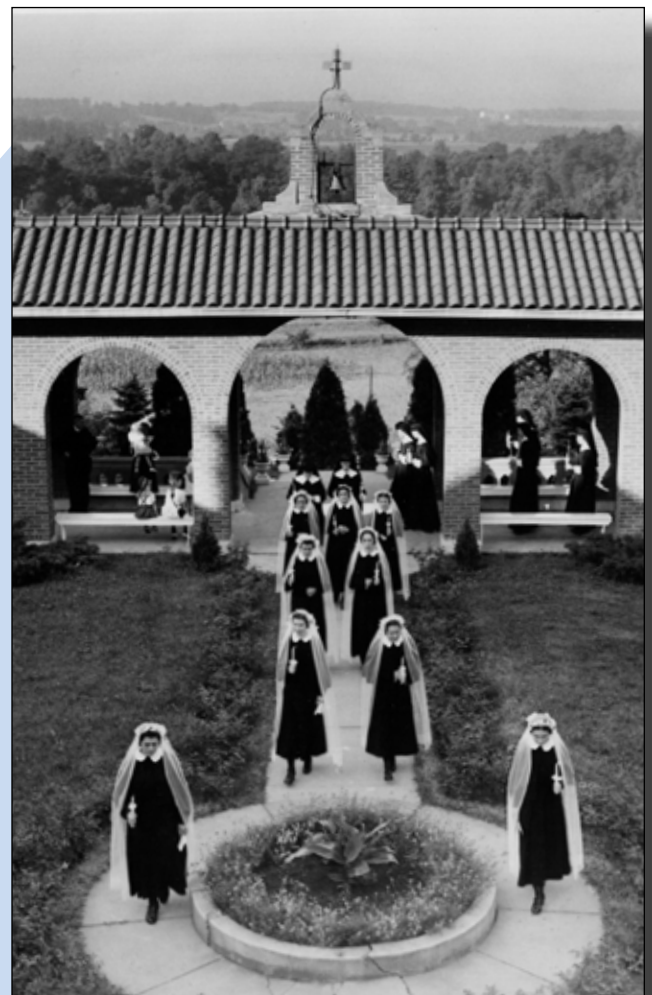
— Linda Poheco,
New Bedford, Mass.

“Victory Noll was my second home. Being so far away from my home in India, this was a special place where I received so much love and peace. It was a blessing to know and interact with so many wonderful Sisters and receive their immense love, prayers and support. Best wishes on the 100th anniversary celebrations to Victory Noll.”

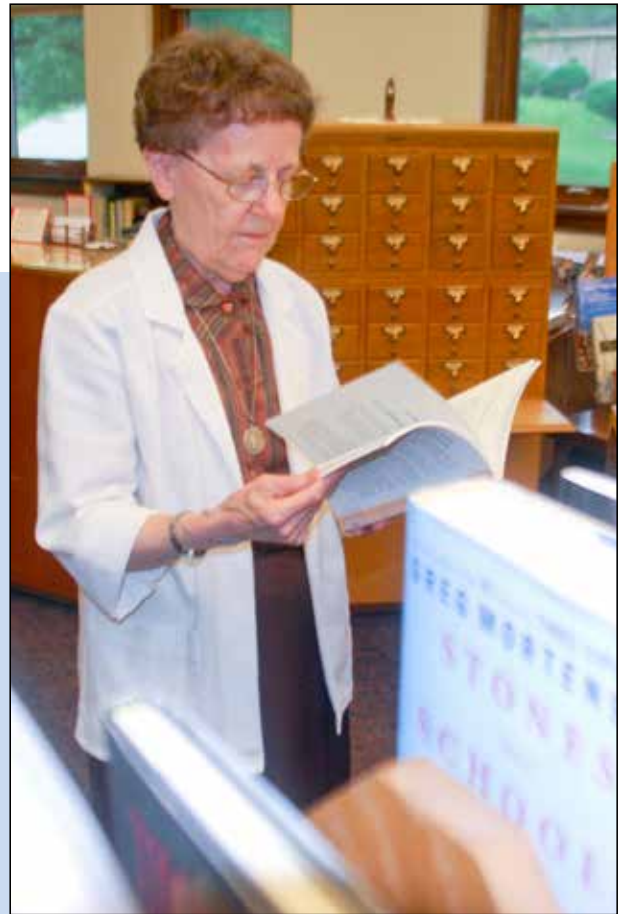
— Mini Mathew, Huntington, Ind.

“Much love to your long history of missionary work not only here but in the entire country.”

— Joan Gore, Phoenix, Ariz.



OUR LADY OF VICTORY MISSIONARY SISTERS



“I learned the real difference between change and transformation as I witnessed the Sisters open their hearts completely to the plan of God. I learned the real challenge of interior freedom, witnessing the Sisters acknowledge their strength found in vulnerability, their unity found in great diversity, and their religious life found in the seeds of their catechetical vocation. The real gift of community is that the Sisters embrace their responsibilities to the future of religious life beyond their own reality as a congregation, and their movement into the future, together, beyond any clarity or certainty. From the Sisters, I learned the real gift of the prophetic life and mystical nature of religious life. I hope the Sisters know how their presence has transformed the lives of countless people over these 100 years. They have led many others to the heart of God. I know, because I am one of them.”

— Carol Zinn, SSJ, Silver Spring, Md.
Executive Director,
Leadership Conference of
Women Religious (LCWR)

OUR LADY OF VICTORY MISSIONARY SISTERS



“It was a great honor and privilege getting to know the Victory Noll Sisters. I knew there was something so unique and special about the community. Their faces were filled with joy and peace and always welcoming. I was able to witness the love of God they spread in the many ways they treated each other with constant caring and support. They are a spirited group of women who look after not only those in their own community but anyone they come in contact with. One of the most valuable things they will pass down is their strong advocacy for social justice and to treat all of God’s creation as equal and with utmost dignity. Their ministries have reached out to numerous organizations and people to focus on ways we can all go out into the community and share God’s love. I don’t know if they realize the impact they have had with their gracious ways and simple life. If only we can all do our part as we’ve observed how they have done. They treat the Earth as a sacred ground using their resources to keep it as God intended. Many have been inspired by their devotion to the Earth. This world has definitely been made better by their ministry and examples.”

— Kathy Freiburger, Markle, Ind.



“The contribution of the Sisters left a lot to remember to this day. They were assets to the parish and community in the support of the poor and the neighborhood during the holidays.”

— Julia A. Garcia, Saint Agnes Parish, Phoenix, Ariz.







EXTRA-ORDINARY CHAPTER, OCTOBER 2021

Like fenceposts along a winding country road, Chapter proceedings have marked the journey of Our Lady of Victory Missionary Sisters, with each one a distinctive moment in the timeline of the Congregation. Held like clockwork every four years, Chapters have been a time to gather and reconnect, a time to reminisce, but mostly a time to look ahead, to chart the course into the future.

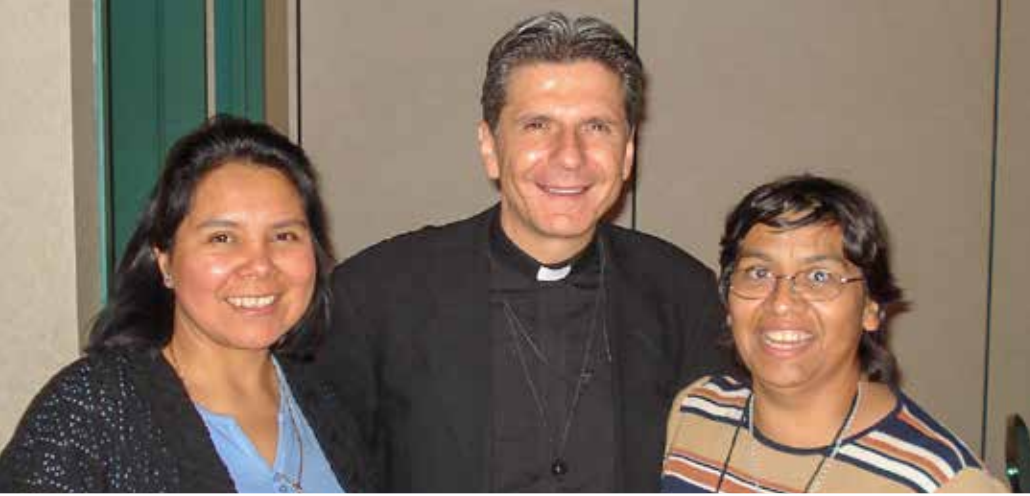
OLVM faced many major decisions. The aging Community has been planning for its fulfillment — a time when they will not have the capability or the members to have an active role in their mission.

At the 21st General Chapter in March 2020, the Sisters laid the groundwork to change the way they are governed and who will oversee everything from basic care and needs of the Sisters to how their resources will be shared.

A quickening timeline called for one final Chapter, just 19 months after the previous one. These proceedings, not numbered, but aptly titled the “Extra-ordinary” Chapter, gave final approval to the major decisions determining the shape and fashion the OLVM mission will take, and securing that it will continue well into the future. But just as importantly, this Chapter allowed the Sisters to “Cross to New Life” and embrace the next phase of their journey, secure in the knowledge their charism will go on even as their physical presence fades from view. In that way, this Chapter truly was extraordinary.









COVENANT ASSOCIATES



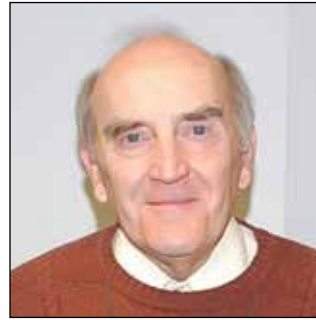
COVENANT ASSOCIATES



Sue Brackenbury
Ft. Collins, CO



**Mary Alice
Bramming**
Denver, CO



Alan Bronder
Albuquerque, NM



Marilyn J. Brown
Ft. Wayne, IN



**Margaret Taylor
Chapman**
Jefferson City, MO



Dorothy Cuellar
Ossian, IN



**Mary Agnes
Moffit Dwyer**
Yarmouth, ME



Gisela Feil
Avon, OH



Helen Gallagher
Huntington, IN



Teresita C. Garrido
Marietta, GA



**Steve Hay &
Palmira Perea-Hay**
Albuquerque, NM



**Marta
Hernandez-Sayeed**
Lincolnwood, IL

COVENANT ASSOCIATES



Beverly Horan
Sequim, WA



Pauline M. Horne
Uniondale, IN



**Alice & Terry
Kelly**
Denver, CO



Lu Knot
North Manchester, IN



Alicia Martinez
El Centro, CA



Jane McClellan
Ft. Collins, CO



Barbara McCarthy
Huntington, IN



Martha Medina
Albuquerque, NM



**Elizabeth (Betty)
L. Oakes**
Ossian, IN



Artie & Eva Ortiz
Gary, IN



Carol Passmore
Lincolnwood, IL



Pamela Pranger
Huntington, IN

COVENANT ASSOCIATES



Joyce Racine
Ft. Wayne, IN



**Evangelina Palma
Ramirez**
Lansing, MI



Blanca Regalado
Chicago, IL



James R. Ritter
Huntington, IN



Andrea Rodriguez
Lansing, MI



**Maria Teresa
Rosas**
Harlingen, TX



Rita Santistevan
Ranchos de Taos, NM



Michael Seiberlich
Chicago, IL



Kellie Steel
Ft. Wayne, IN



Susan K. Tomita
Albuquerque, NM



Rev. Frank Torres
Hebron, IN



**Mrs. Socorro
Torres**
Harlingen, TX

COVENANT ASSOCIATES



Dorothy Wolf
El Centro, CA



Isabel Zarco
Colonia Jardines de
Churubusco
Mexico DF C.P.

Covenant Associates are committed women and men who:

- ◆ Share, in their own setting, the spirit and mission of Our Lady of Victory Missionary Sisters
- ◆ Help to address the needs of the poor and oppressed
- ◆ Work for peace and justice
- ◆ Reach out with their skills, service and prayer to bring healing and reconciliation.





ACKNOWLEDGEMENTS

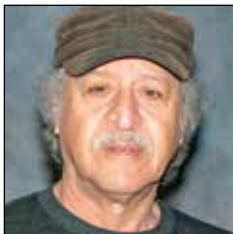
Our Lady of Victory Missionary Sisters wish to recognize those individuals, groups and organizations that contributed to this publication.



Centennial Committee

FRONT ROW — Sr. Rose Zita Rosonke, Sr. Helen Rodriguez-Marin, Associate Betty Oakes, Associate Helen Gallagher.
BACK ROW — Sr. Guadalupe Aguilar-Huanca, Sr. Rita Musante, Sr. Judy Turnock

Congregational Offices / Victory Noll Staff



Adan Castillo
Maintenance



Diane Gearhart
Administrative
Assistant



Jeff Hoffman
Archives/
Librarian



Keith Lawson
Chief Financial
Officer



Paul Siegfried
Communications
Coordinator



Sherry Thurston
Pastoral Companion
Saint Anne Communities



Jo Yahne
Staff Accountant/
Purchasing



ACKNOWLEDGEMENTS

Our Sunday Visitor



From their earliest days, the OLVM Sisters have had a special relationship with Our Sunday Visitor and their founder, Archbishop John Francis Noll.

We thank the staff at OSV for their work and attention in the printing of this special publication.

Friends, Family & Partners — Past and Present

Our Lady of Victory Missionary Sisters have been built on being a supportive and welcoming community. They have formed partnerships from an outreach ministry in Bolivia, to working with local organizations to secure the future of Victory Noll. They continue to foster long-lasting friendships and embrace new ones. OLVM Sisters have long been buoyed by the support and love from these friends and family.



OUR LADY OF VICTORY MISSIONARY SISTERS

© 2022 Our Lady of Victory Missionary Sisters, Inc.
1900 W. Park Drive
Huntington, IN 46750
www.olvm.org

